

Anti-MOUSE IgG2b (Gamma 2b chain) (ATTO 488 Conjugated) Pre-adsorbed Secondary Antibody

Goat Polyclonal, ATTO 488

Catalog # ASR3230

Product Information

Description	Anti-MOUSE IgG2b (Gamma 2b chain) (GOAT) Antibody ATTO 488 Conjugated (Min Cross Bv, Hu, and Rb Serum Proteins)
Host	Goat
Conjugate	ATTO 488
FP Value	4.0 moles ATTO 488 per mole of IgG
Target Species	Mouse
Reactivity	Mouse
Clonality	Polyclonal
Application	IF, DB
Physical State	Lyophilized
Host Isotype	IgG
Target Isotype	IgG2b
Buffer	0.02 M Potassium Phosphate, 0.15 M Sodium Chloride, pH 7.2
Immunogen	Mouse IgG2b heavy chain
Reconstitution Volume	500 μ L
Reconstitution Buffer	Restore with deionized water (or equivalent)
Stabilizer	10 mg/mL Bovine Serum Albumin (BSA) - Immunoglobulin and Protease free
Preservative	0.01% (w/v) Sodium Azide

Additional Information

Shipping Condition	Ambient
Application Note	Anti-Mouse IgG2b secondary antibody is suitable for ELISA, Immunohistochemistry, western blotting as well as other anti IgG2b antibody based assays. The emission spectra for this ATTO conjugate matches the principle output wavelengths of most common fluorescence instrumentation.
Purity	Anti-MOUSE IgG2b (Gamma 2b chain) Antibody was prepared from monospecific antiserum by immunoaffinity chromatography using antigens coupled to agarose beads followed by solid phase adsorption(s) to remove any unwanted reactivities. Assay by immunoelectrophoresis resulted in a single precipitin arc against anti-Goat Serum, Mouse Serum and Mouse IgG2b. No reaction was observed against Bovine, Human, and Rabbit Serum Proteins. Specificity was confirmed by ELISA at less than 1% of target signal.
Storage Condition	Store vial at 4° C prior to restoration. For extended storage aliquot contents and freeze at -20° C or below. Avoid cycles of freezing and thawing. Centrifuge product if not completely clear after standing at room temperature. This product is stable for several weeks at 4° C as an undiluted liquid. Dilute only prior to immediate use.

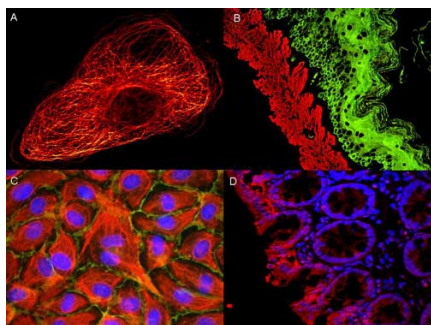
Precautions Note

This product is for research use only and is not intended for therapeutic or diagnostic applications.

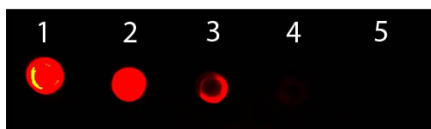
Background

Mouse IgG2b secondary antibody is available in a variety of formats. ATTO 488 Conjugated antibodies are designed for STED microscopy, FRET, immunofluorescence microscopy, fluorescence based plate assays (FLISA) and fluorescent western blotting. This product is also suitable for multiplex analysis, including multicolor imaging, utilizing various commercial platforms.

Images



ATTO ® dyes can be used for multicolor immunofluorescent detection with low background and high signal. Examples shown are: A. Tubulin in PtK2- male Rat Kangaroo Kidney Epithelial Cells was detected using ATTO 532 labeled secondary antibody. B. Muscle alpha-actin was stained with a mouse primary antibody and ATTO 488 anti-mouse IgG (green) while Cytokeratin was stained with polyclonal rabbit anti-cytokeratin and ATTO 647N anti-rabbit IgG (red). C. HUVEC (Human umbilical vein endothelial cells) were stained with anti-Vimentin-ATTO 532 (green), anti-E-Cadherin-ATTO 655 (red) and DAPI (blue). D. Rat colon sections were stained with Anti-Aquaporin 3-ATTO 594 antibody. Hoechst 33342 (blue) is used as counterstain. Images provided courtesy of Dr. Jörg Reichwein, ATTO-TEC GmbH



Dot Blot of Goat anti-Mouse IgG2b (Gamma 2b Chain) Antibody ATTO 488 Conjugated. Antigen: Mouse IgG2b. Load: Lane 1 - 50 ng Lane 2 - 16.67 ng Lane 3 - 5.56 ng Lane 4 - 1.85 ng Lane 5 - 0.62 ng. Primary antibody: none. Secondary antibody: Goat anti-Mouse IgG2b (Gamma 2b Chain) Antibody ATTO 488 Conjugated at 1:1,000 for 60 min at RT. Block: MB-070 for 60 min at RT.

Please note: All products are 'FOR RESEARCH USE ONLY. NOT FOR USE IN DIAGNOSTIC OR THERAPEUTIC PROCEDURES'.