

Chicken IgG F(c) Peroxidase

Catalog # ASR3320

Product Information

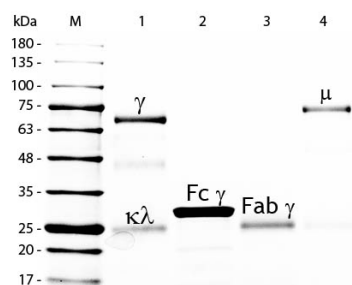
| | |
|------------------------------|--|
| Description | CHICKEN IgG F(c) fragment Peroxidase conjugated |
| Conjugate | Peroxidase (Horseradish) |
| Physical State | Lyophilized |
| Host Isotype | IgG F(c) |
| Buffer | 0.02 M Potassium Phosphate, 0.15 M Sodium Chloride, pH 7.2 |
| Species of Origin | Chicken |
| Reconstitution Volume | 1.0 mL |
| Reconstitution Buffer | Restore with deionized water (or equivalent) |
| Stabilizer | 10 mg/mL Bovine Serum Albumin (BSA) - Immunoglobulin and Protease free |
| Preservative | 0.01% (w/v) Gentamicin Sulfate. Do NOT add Sodium Azide! |

Additional Information

| | |
|---------------------------|--|
| Shipping Condition | Ambient |
| Purity | This product was prepared from normal serum by delipidation, salt fractionation, ion exchange chromatography followed by papain digestion and extensive dialysis against the buffer stated above. Assay by immunoelectrophoresis resulted in a single precipitin arc against anti-Peroxidase, anti- Chicken IgG, anti-Chicken IgG F(c) and anti-Chicken Serum. No reaction was observed against anti-Chicken IgG F(ab') ₂ or anti-Papain. |
| Storage Condition | Store vial at 4° C prior to restoration. For extended storage aliquot contents and freeze at -20° C or below. Avoid cycles of freezing and thawing. Centrifuge product if not completely clear after standing at room temperature. This product is stable for several weeks at 4° C as an undiluted liquid. Dilute only prior to immediate use. |
| Precautions Note | This product is for research use only and is not intended for therapeutic or diagnostic applications. |

Images

SDS-PAGE of Chicken IgG F(c) Fragment Peroxidase Conjugated (p/n ASR3320). Lane M: 5 µL Opal Prestained Marker (p/n MB-210-0500). Lane 1: Reduced Chicken IgG Whole Molecule (p/n 003-0102). Lane 2: Reduced Chicken IgG F(c) Fragment Peroxidase Conjugated (p/n ASR3320). Lane 3: Reduced Chicken IgG F(ab) Fragment (p/n 003-0105). Lane 4: Reduced Chicken IgM Whole Molecule (p/n 003-0107). Load: 1 µg per lane. Predicted/Observed



size: IgG at 72 and 25 kDa; F(c) at 25 kDa; F(ab) at 25 kDa; IgM at 75 kDa. Observed F(c) Fragment migrates slightly higher. Other bands: Chicken IgG heavy chain alternative splicing variant at approximately 40 kDa in Lane 1.

Please note: All products are 'FOR RESEARCH USE ONLY. NOT FOR USE IN DIAGNOSTIC OR THERAPEUTIC PROCEDURES'.