

Anti-Sheep IgG (H&L) Secondary Antibody

Donkey Polyclonal, Unconjugated

Catalog # ASR3545

Product Information

Description	Anti-SHEEP IgG (H&L) (DONKEY) Antibody
Host	Donkey
Conjugate	Unconjugated
Target Species	Sheep
Clonality	Polyclonal
Application	WB
Physical State	Lyophilized
Host Isotype	IgG
Target Isotype	IgG (H&L)
Buffer	0.01 M Sodium Phosphate, 0.15 M Sodium Chloride, pH 7.2
Immunogen	Sheep IgG whole molecule
Reconstitution Volume	5.0 mL
Reconstitution Buffer	Restore with deionized water (or equivalent)
Stabilizer	None
Preservative	0.01% (w/v) Sodium Azide

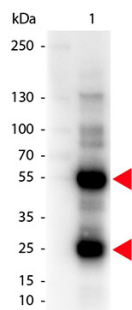
Additional Information

Shipping Condition	Ambient
Application Note	Anti-Sheep IgG unconjugated antibody is suitable for multiple immunoassays including immunoblotting (western or dot blot), ELISA, immunoperoxidase electron microscopy and immunohistochemistry as well as other peroxidase-antibody based enzymatic assays requiring lot-to-lot consistency. The antibody may be conjugated to the end user specifications.
Purity	Sheep IgG (H&L) Antibody is an IgG fraction antibody purified from monospecific antiserum by a multi-step process which includes delipidation, salt fractionation and ion exchange chromatography followed by extensive dialysis against the buffer stated above. Assay by immunoelectrophoresis resulted in a single precipitin arc against anti-Donkey Serum, Sheep IgG and Sheep Serum. This antibody will detect intact and immunoglobulin components from Sheep.
Storage Condition	Store vial at 4° C prior to restoration. For extended storage aliquot contents and freeze at -20° C or below. Avoid cycles of freezing and thawing. Centrifuge product if not completely clear after standing at room temperature. This product is stable for several weeks at 4° C as an undiluted liquid. Dilute only prior to immediate use.
Precautions Note	This product is for research use only and is not intended for therapeutic or diagnostic applications.

Background

Anti-Sheep IgG unconjugated antibody was generated in donkey and detects specifically sheep IgG. This primary unconjugated anti-Sheep antibody is ideal for investigators who routinely perform titration assays, western-blot, immunoprecipitation and more generally immunoassays.

Images



Western Blot of Donkey anti-Sheep IgG Antibody. Lane 1: Sheep IgG. Lane 2: None. Load: 50 ng per lane. Primary antibody: Sheep antibody at 1,000 overnight at 4°C. Secondary antibody: Peroxidase donkey secondary antibody at 1:40,000 for 30 min at RT. Block: MB-070 for 30 min at RT. Predicted/Observed size: 28 & 55 kDa, 28 & 55 kDa for Sheep IgG. Other band(s): Sheep IgG splice variants and isoforms.

Please note: All products are 'FOR RESEARCH USE ONLY. NOT FOR USE IN DIAGNOSTIC OR THERAPEUTIC PROCEDURES'.