

# Anti-Swine IgG (H&L) Secondary Antibody

Rabbit Polyclonal, Unconjugated

Catalog # ASR3546

## Product Information

---

<b>Description</b>	Anti-SWINE IgG (H&L) (RABBIT) Antibody
<b>Host</b>	Rabbit
<b>Conjugate</b>	Unconjugated
<b>Target Species</b>	Swine
<b>Clonality</b>	Polyclonal
<b>Application</b>	WB
<b>Physical State</b>	Lyophilized
<b>Host Isotype</b>	IgG
<b>Target Isotype</b>	IgG (H&L)
<b>Buffer</b>	0.02 M Potassium Phosphate, 0.15 M Sodium Chloride, pH 7.2
<b>Immunogen</b>	Swine IgG whole molecule
<b>Reconstitution Volume</b>	5.0 mL
<b>Reconstitution Buffer</b>	Restore with deionized water (or equivalent)
<b>Stabilizer</b>	None
<b>Preservative</b>	None

## Additional Information

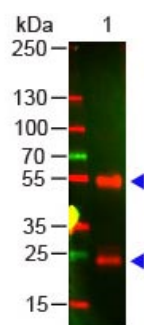
---

<b>Shipping Condition</b>	Ambient
<b>Purity</b>	This product is an IgG fraction antibody purified from monospecific antiserum by a multi-step process which includes delipidation, salt fractionation and ion exchange chromatography followed by extensive dialysis against the buffer stated above. Assay by immunoelectrophoresis resulted in a single precipitin arc against anti-Rabbit Serum, Swine IgG and Swine Serum.
<b>Storage Condition</b>	Store vial at 4° C prior to restoration. For extended storage aliquot contents and freeze at -20° C or below. Avoid cycles of freezing and thawing. Centrifuge product if not completely clear after standing at room temperature. This product is stable for several weeks at 4° C as an undiluted liquid. Dilute only prior to immediate use.
<b>Precautions Note</b>	This product is for research use only and is not intended for therapeutic or diagnostic applications.

## Images

---

Western Blot of Rabbit anti-Swine IgG Antibody. Lane 1:  
Swine IgG. Load: 100 ng per lane. Primary antibody:  
Swine IgG Antibody at 1:1000 for overnight at 4°C.



Secondary antibody: DyLight™ 649 goat anti-rabbit at 1:20,000 for 30 min at RT. Block: MB-070 for 30 min at RT.

Please note: All products are 'FOR RESEARCH USE ONLY. NOT FOR USE IN DIAGNOSTIC OR THERAPEUTIC PROCEDURES'.