

# Chicken IgG (BULK ORDER)

Catalog # ASR3559

## Product Information

---

<b>Description</b>	CHICKEN IgG whole molecule (BULK ORDER)
<b>Conjugate</b>	Unconjugated
<b>Physical State</b>	Lyophilized
<b>Host Isotype</b>	IgG
<b>Buffer</b>	0.02 M Potassium Phosphate, 0.15 M Sodium Chloride, pH 7.2
<b>Species of Origin</b>	Chicken
<b>Reconstitution Volume</b>	1.0 mL
<b>Reconstitution Buffer</b>	Restore with deionized water (or equivalent)
<b>Stabilizer</b>	None
<b>Preservative</b>	0.01% (w/v) Sodium Azide

## Additional Information

---

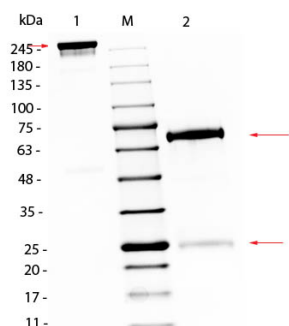
<b>Shipping Condition</b>	Ambient
<b>Application Note</b>	Chicken IgG whole molecule can be utilized as a control or standard reagent in Western Blotting and ELISA experiments.
<b>Purity</b>	Chicken IgG whole molecule was prepared from normal serum by a multi-step process which includes delipidation, salt fractionation and ion exchange chromatography followed extensive dialysis against the buffer stated above. Chicken IgG whole molecule assayed by immunoelectrophoresis resulted in a single precipitin arc against anti-Chicken IgG and anti-Chicken Serum.
<b>Storage Condition</b>	Store vial at 4° C prior to restoration. Restore with 1.0 mL of deionized water (or equivalent). For extended storage aliquot contents and freeze at -20° C or below. Avoid cycles of freezing and thawing. Centrifuge product if not completely clear after standing at room temperature. This product is stable for several weeks at 4° C as an undiluted liquid. Dilute only prior to immediate use. Expiration date is one (1) year from date of restoration.
<b>Precautions Note</b>	This product is for research use only and is not intended for therapeutic or diagnostic applications.

## Background

---

Secreted as part of the adaptive immune response by plasma B cells, immunoglobulin G constitutes 75% of serum immunoglobulins. Immunoglobulin G binds to viruses, bacteria, as well as fungi and facilitates their destruction or neutralization via agglutination (and thereby immobilizing them), activation of the compliment cascade, and opsinization for phagocytosis. The whole IgG molecule possesses both the F(c) region, recognized by high-affinity Fc receptor proteins, as well as the F(ab) region possessing the epitope-recognition site. Both heavy and light chains of the antibody molecule are present.

## Images



SDS PAGE of Chicken IgG Whole Molecule. Lane 1: Non-Reduced Chicken IgG Whole Molecule. Lane 2: 5  $\mu$ L Opal Prestained Marker (p/n MB-210-0500). Lane 3: Reduced Chicken IgG Whole Molecule. Load: 1  $\mu$ g per lane. Predicted/Observed size: Non-Reduced at 160kDa/Observed at 245 kDa; Reduced at 72, 25 kDa. Non-reduced IgG migrates slightly higher.

Please note: All products are 'FOR RESEARCH USE ONLY. NOT FOR USE IN DIAGNOSTIC OR THERAPEUTIC PROCEDURES'.