

Rabbit IgG Fab (BULK ORDER)

Catalog # ASR3581

Product Information

Description	RABBIT IgG F(ab) fragment (BULK ORDER)
Conjugate	Unconjugated
Physical State	Liquid (sterile filtered)
Host Isotype	IgG F(ab)
Buffer	0.02 M Potassium Phosphate, 0.15 M Sodium Chloride, pH 7.2
Species of Origin	Rabbit
Preservative	0.01% (w/v) Sodium Azide

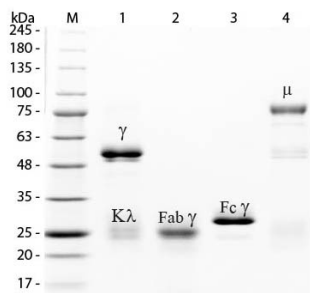
Additional Information

Shipping Condition	Wet Ice
Application Note	Rabbit IgG F(ab) Fragment can be utilized as a control or standard reagent in Western Blotting and ELISA experiments.
Purity	Rabbit IgG F(ab) fragment was prepared from normal serum by a multi-step process which includes delipidation, salt fractionation, ion exchange chromatography and papain digestion followed by chromatographic separation and extensive dialysis against the buffer stated above. Rabbit IgG F(ab) fragment was assayed by immunoelectrophoresis resulted in a single precipitin arc against anti-Rabbit Serum, anti-Rabbit IgG and anti-Rabbit IgG F(ab') ₂ . No reaction was observed against anti-Rabbit IgG F(c) or anti-Papain.
Storage Condition	Store vial at 4° C prior to restoration. For extended storage aliquot contents and freeze at -20° C or below. Avoid cycles of freezing and thawing. Centrifuge product if not completely clear after standing at room temperature. Rabbit IgG F(ab) fragment is stable for several weeks at 4° C as an undiluted liquid. Dilute only prior to immediate use.
Precautions Note	This product is for research use only and is not intended for therapeutic or diagnostic applications.

Background

Secreted as part of the adaptive immune response by plasma B cells, immunoglobulin G constitutes 75% of serum immunoglobulins. Immunoglobulin G binds to viruses, bacteria, as well as fungi and facilitates their destruction or neutralization via agglutination (and thereby immobilizing them), activation of the compliment cascade, and opsinization for phagocytosis. The F(ab) fragment is the portion of the antibody that binds to the antigen target. The immunoglobulin F(ab) also possesses one constant and one variable region of both the heavy and light chain.

Images



SDS-PAGE of Rabbit IgG F(ab) Fragment (BULK ORDER) (p/n ASR3581). Lane M: 3 μ L Opal Prestained Marker (p/n MB-210-0500). Lane 1: Reduced Rabbit IgG Whole Molecule (p/n 011-0102). Lane 2: Reduced Rabbit IgG F(ab) Fragment (BULK ORDER) (p/n ASR3581). Lane 3: Reduced Rabbit IgG F(c) Fragment (p/n 011-0103). Lane 4: Reduced Rabbit IgM Whole Molecule (p/n 011-0107). Load: 1 μ g for F(ab) and F(c); 1.2 μ g for IgG and IgM. Predicted/Observed size: IgG at 50 and 25 kDa; F(c) at 25 kDa; F(ab) at 25 kDa; IgM at 70 and 23 kDa. Observed F(c) Fragment migrates slightly higher.

Please note: All products are 'FOR RESEARCH USE ONLY. NOT FOR USE IN DIAGNOSTIC OR THERAPEUTIC PROCEDURES'.