

Swine IgG

Catalog # ASR3586

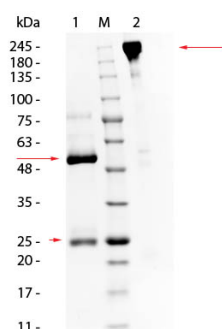
Product Information

Description	SWINE IgG whole molecule
Conjugate	Unconjugated
Physical State	Lyophilized
Host Isotype	IgG
Buffer	0.02 M Potassium Phosphate, 0.15 M Sodium Chloride, pH 7.2
Species of Origin	Swine
Reconstitution Volume	5.0 mL
Reconstitution Buffer	Restore with deionized water (or equivalent)
Stabilizer	None
Preservative	0.01% (w/v) Sodium Azide

Additional Information

Shipping Condition	Ambient
Purity	This product was prepared from normal serum by a multi-step process which includes delipidation, salt fractionation and ion exchange chromatography followed by extensive dialysis against the buffer stated above. Assay by immunoelectrophoresis resulted in a single precipitin arc against anti-Swine IgG anti-Swine Serum.
Storage Condition	Store vial at 4° C prior to restoration. For extended storage aliquot contents and freeze at -20° C or below. Avoid cycles of freezing and thawing. Centrifuge product if not completely clear after standing at room temperature. This product is stable for several weeks at 4° C as an undiluted liquid. Dilute only prior to immediate use.
Precautions Note	This product is for research use only and is not intended for therapeutic or diagnostic applications.

Images



SDS PAGE of Swine IgG Whole Molecule. Lane 1: Reduced Swine IgG Whole Molecule. Lane 2: 5 µL Opal Prestained Marker (p/n MB-210-0500). Lane 3: Non-Reduced Swine IgG Whole Molecule. Load: 1 µg per lane. Predicted/Observed size: Non-Reduced at 160kDa/Observed at 245 kDa; Reduced at 55, 25 kDa. Non-reduced IgG migrates slightly higher.

Please note: All products are 'FOR RESEARCH USE ONLY. NOT FOR USE IN DIAGNOSTIC OR THERAPEUTIC PROCEDURES'.