

AADAC Antibody (monoclonal) (M01)

Mouse monoclonal antibody raised against a partial recombinant AADAC.

Catalog # AT1002a

Product Information

| | |
|--------------------------|---------------------------|
| Application | WB, E |
| Primary Accession | P22760 |
| Other Accession | NM_001086 |
| Reactivity | Human |
| Host | mouse |
| Clonality | monoclonal |
| Isotype | IgG2b Kappa |
| Clone Names | 2E9 |
| Calculated MW | 45734 |

Additional Information

| | |
|---------------------------|---|
| Gene ID | 13 |
| Other Names | Arylacetamide deacetylase, AADAC, DAC |
| Target/Specificity | AADAC (NP_001077, 201 a.a. ~ 300 a.a) partial recombinant protein with GST tag. MW of the GST tag alone is 26 KDa. |
| Dilution | WB~~1:500~1000 E~~N/A |
| Format | Clear, colorless solution in phosphate buffered saline, pH 7.2 . |
| Storage | Store at -20°C or lower. Aliquot to avoid repeated freezing and thawing. |
| Precautions | AADAC Antibody (monoclonal) (M01) is for research use only and not for use in diagnostic or therapeutic procedures. |

Background

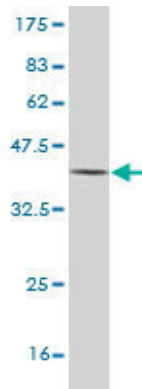
Microsomal arylacetamide deacetylase competes against the activity of cytosolic arylamine N-acetyltransferase, which catalyzes one of the initial biotransformation pathways for arylamine and heterocyclic amine carcinogens

References

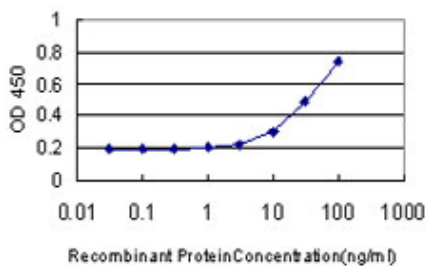
1.N-Glycosylation during translation is essential for human arylacetamide deacetylase enzyme activity.Muta K, Fukami T, Nakajima M, Yokoi TBiochem Pharmacol. 2013 Oct 11. pii: S0006-2952(13)00651-5. doi: 10.1016/j.bcp.2013.10.001.2.Metabolic activation by human arylacetamide deacetylase, CYP2E1, and CYP1A2 causes phenacetin-induced methemoglobinemia.Kobayashi Y, Fukami T, Higuchi R, Nakajima M, Yokoi

T.Biochem Pharmacol. 2012 Aug 23;3.A Novel Polymorphic Allele of Human Arylacetamide Deacetylase Leads to Diminished Enzyme Activity.Shimizu M, Fukami T, Kobayashi Y, Takamiya M, Aoki Y, Nakajima M, Yokoi T.Drug Metab Dispos. 2012 Mar 13. [Epub ahead of print]4.Species differences in tissue distribution and enzyme activities of arylacetamide deacetylase in human, rat, and mouse.Kobayashi Y, Fukami T, Nakajima A, Watanabe A, Nakajima M, Yokoi T.Drug Metab Dispos. 2012 Apr;40(4):671-9. Epub 2011 Dec 29.5.Human Arylacetamide Deacetylase Is A Principal Enzyme in Flutamide Hydrolysis.Watanabe A, Fukami T, Nakajima M, Takamiya M, Aoki Y, Yokoi T.Drug Metab Dispos. 2009 Jul;37(7):1513-20. Epub 2009 Apr 1.

Images



Antibody Reactive Against Recombinant Protein.Western Blot detection against Immunogen (36.74 KDa) .



Detection limit for recombinant GST tagged AADAC is approximately 3ng/ml as a capture antibody.

Please note: All products are 'FOR RESEARCH USE ONLY. NOT FOR USE IN DIAGNOSTIC OR THERAPEUTIC PROCEDURES'.