

ABCF2 Antibody (monoclonal) (M01)

Mouse monoclonal antibody raised against a partial recombinant ABCF2.

Catalog # AT1010a

Product Information

Application	WB, IHC, IP, E
Primary Accession	Q9UG63
Other Accession	BC001661
Reactivity	Human
Host	mouse
Clonality	monoclonal
Isotype	IgG2a Kappa
Clone Names	1D11
Calculated MW	71290

Additional Information

Gene ID	10061
Other Names	ATP-binding cassette sub-family F member 2, Iron-inhibited ABC transporter 2, ABCF2
Target/Specificity	ABCF2 (AAH01661, 1 a.a. ~ 110 a.a) partial recombinant protein with GST tag. MW of the GST tag alone is 26 KDa.
Dilution	WB~~1:500~1000 IHC~~1:100~500 IP~~N/A E~~N/A
Format	Clear, colorless solution in phosphate buffered saline, pH 7.2 .
Storage	Store at -20°C or lower. Aliquot to avoid repeated freezing and thawing.
Precautions	ABCF2 Antibody (monoclonal) (M01) is for research use only and not for use in diagnostic or therapeutic procedures.

Background

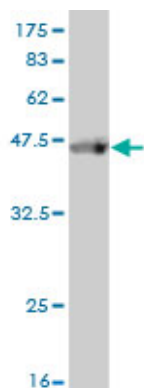
The protein encoded by this gene is a member of the superfamily of ATP-binding cassette (ABC) transporters. ABC proteins transport various molecules across extra- and intracellular membranes. ABC genes are divided into seven distinct subfamilies (ABC1, MDR/TAP, MRP, ALD, OABP, GCN20, and White). This protein is a member of the GCN20 subfamily. Alternative splicing of this gene results in multiple transcript variants.

References

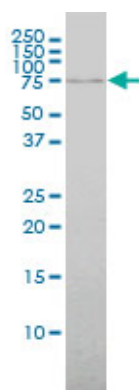
Association study between single-nucleotide polymorphisms in 199 drug-related genes and commonly

measured quantitative traits of 752 healthy Japanese subjects. Saito A, et al. J Hum Genet, 2009 Jun. PMID 19343046. Can ABCF2 protein expression predict the prognosis of uterine cancer? Nishimura S, et al. Br J Cancer, 2008 Nov 18. PMID 19002184. Differential expression of ABCF2 protein among different histologic types of epithelial ovarian cancer and in clear cell adenocarcinomas of different organs. Nishimura S, et al. Hum Pathol, 2007 Jan. PMID 16996567. Identification of overexpression and amplification of ABCF2 in clear cell ovarian adenocarcinomas by cDNA microarray analyses. Tsuda H, et al. Clin Cancer Res, 2005 Oct 1. PMID 16203778. The status, quality, and expansion of the NIH full-length cDNA project: the Mammalian Gene Collection (MGC). Gerhard DS, et al. Genome Res, 2004 Oct. PMID 15489334.

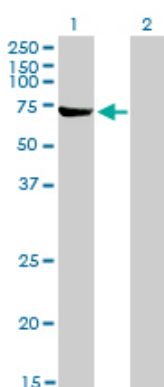
Images



Antibody Reactive Against Recombinant Protein. Western Blot detection against Immunogen (37.73 KDa) .

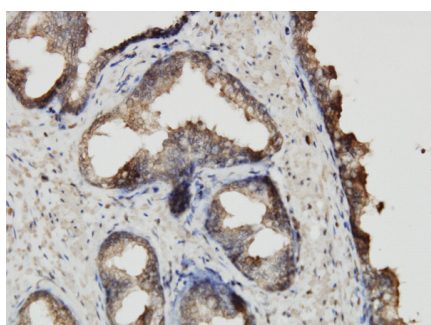


ABCF2 monoclonal antibody (M01), clone 1D11 Western Blot analysis of ABCF2 expression in Hela ((Cat # AT1010a)

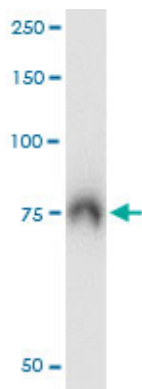


Western Blot analysis of ABCF2 expression in transfected 293T cell line by ABCF2 monoclonal antibody (M01), clone 1D11.

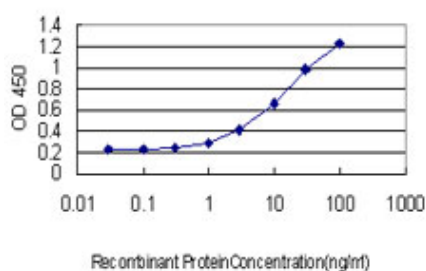
Lane 1: ABCF2 transfected lysate(68.53 KDa).
Lane 2: Non-transfected lysate.



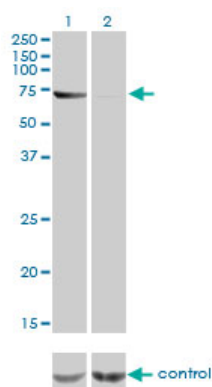
Immunoperoxidase of monoclonal antibody to ABCF2 on formalin-fixed paraffin-embedded human prostate. [antibody concentration 3 ug/ml]



Immunoprecipitation of ABCF2 transfected lysate using anti-ABCF2 monoclonal antibody and Protein A Magnetic Bead ([U0007](#)), and immunoblotted with ABCF2 monoclonal antibody.



Detection limit for recombinant GST tagged ABCF2 is approximately 0.3ng/ml as a capture antibody.



Western blot analysis of ABCF2 over-expressed 293 cell line, cotransfected with ABCF2 Validated Chimera RNAi (Cat # AT1010a)

Please note: All products are 'FOR RESEARCH USE ONLY. NOT FOR USE IN DIAGNOSTIC OR THERAPEUTIC PROCEDURES'.