

## ACD Antibody (monoclonal) (M02)

Mouse monoclonal antibody raised against a full length recombinant ACD.  
Catalog # AT1023a

### Product Information

---

<b>Application</b>	WB, IHC, IF, IP, E
<b>Primary Accession</b>	<a href="#">Q96AP0</a>
<b>Other Accession</b>	<a href="#">BC016904</a>
<b>Reactivity</b>	Human
<b>Host</b>	mouse
<b>Clonality</b>	monoclonal
<b>Isotype</b>	IgG1 Kappa
<b>Clone Names</b>	S1
<b>Calculated MW</b>	48967

### Additional Information

---

<b>Gene ID</b>	65057
<b>Other Names</b>	Adrenocortical dysplasia protein homolog, POT1 and TIN2-interacting protein, ACD, PIP1, PTOP, TINT1, TPP1
<b>Target/Specificity</b>	ACD (AAH16904, 1 a.a. ~ 544 a.a) full-length recombinant protein with GST tag. MW of the GST tag alone is 26 KDa.
<b>Dilution</b>	WB~~1:500~1000 IHC~~1:100~500 IF~~1:50~200 IP~~N/A E~~N/A
<b>Format</b>	Clear, colorless solution in phosphate buffered saline, pH 7.2 .
<b>Storage</b>	Store at -20°C or lower. Aliquot to avoid repeated freezing and thawing.
<b>Precautions</b>	ACD Antibody (monoclonal) (M02) is for research use only and not for use in diagnostic or therapeutic procedures.

### Background

---

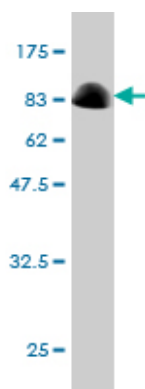
This gene encodes a protein that is involved in telomere function. This protein is one of six core proteins in the telosome/shelterin telomeric complex, which functions to maintain telomere length and to protect telomere ends. Through its interaction with other components, this protein plays a key role in the assembly and stabilization of this complex, and it mediates the access of telomerase to the telomere. Multiple transcript variants encoding different isoforms have been found for this gene. This gene, which is also referred to as TPP1, is distinct from the unrelated TPP1 gene on chromosome 11, which encodes tripeptidyl-peptidase I.

### References

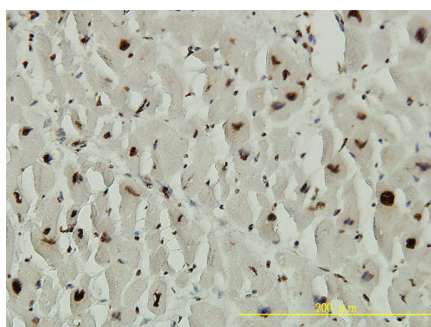
---

1. TIN2-tethered TPP1 recruits human telomerase to telomeres in vivo. Abreu E, Aritonovska E, Reichenbach P, Cristofari G, Culp B, Terns RM, Lingner J, Terns MP. Mol Cell Biol. 2010 Apr 19. [Epub ahead of print]

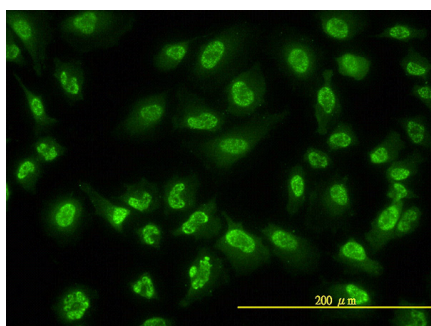
## Images



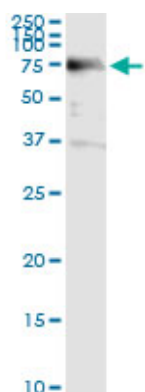
Antibody Reactive Against Recombinant Protein. Western Blot detection against Immunogen (85.58 KDa) .



Immunoperoxidase of monoclonal antibody to ACD on formalin-fixed paraffin-embedded human heart tissue. [antibody concentration 2 ug/ml]

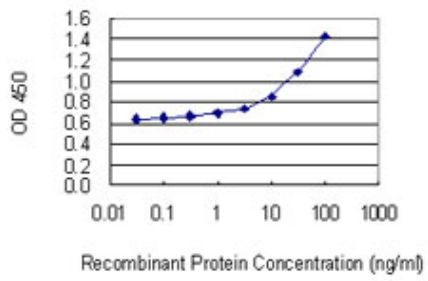


Immunofluorescence of monoclonal antibody to ACD on HeLa cell. [antibody concentration 10 ug/ml]



Immunoprecipitation of ACD transfected lysate using anti-ACD monoclonal antibody and Protein A Magnetic Bead ([U0007](#)), and immunoblotted with ACD MaxPab rabbit polyclonal antibody.

Detection limit for recombinant GST tagged ACD is 0.3 ng/ml as a capture antibody.



Please note: All products are 'FOR RESEARCH USE ONLY. NOT FOR USE IN DIAGNOSTIC OR THERAPEUTIC PROCEDURES'.