

ADAM12 Antibody (monoclonal) (M01)

Mouse monoclonal antibody raised against a partial recombinant ADAM12.

Catalog # AT1042a

Product Information

Application	WB, E
Primary Accession	O43184
Other Accession	NM_003474
Reactivity	Human
Host	mouse
Clonality	monoclonal
Isotype	IgG3 Kappa
Clone Names	1G3
Calculated MW	99542

Additional Information

Gene ID	8038
Other Names	Disintegrin and metalloproteinase domain-containing protein 12, ADAM 12, 3424-, Meltrin-alpha, ADAM12, MLTN
Target/Specificity	ADAM12 (NP_003465, 208 a.a. ~ 304 a.a) partial recombinant protein with GST tag. MW of the GST tag alone is 26 KDa.
Dilution	WB~~1:500~1000 E~~N/A
Format	Clear, colorless solution in phosphate buffered saline, pH 7.2 .
Storage	Store at -20°C or lower. Aliquot to avoid repeated freezing and thawing.
Precautions	ADAM12 Antibody (monoclonal) (M01) is for research use only and not for use in diagnostic or therapeutic procedures.

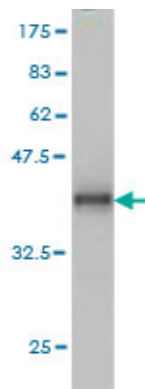
Background

This gene encodes a member of the ADAM (a disintegrin and metalloprotease) protein family. Members of this family are membrane-anchored proteins structurally related to snake venom disintegrins, and have been implicated in a variety of biological processes involving cell-cell and cell-matrix interactions, including fertilization, muscle development, and neurogenesis. This gene has two alternatively spliced transcripts: a shorter secreted form and a longer membrane-bound form. The shorter form is found to stimulate myogenesis.

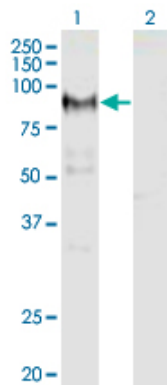
References

1. TM4SF3 promotes esophageal carcinoma metastasis via upregulating ADAM12m expression. Zhou Z, Ran YL, Hu H, Pan J, Li ZF, Chen LZ, Sun LC, Peng L, Zhao XL, Yu L, Sun LX, Yang ZH. Clin Exp Metastasis. 2008;25(5):537-48. Epub 2008 Mar 26.

Images



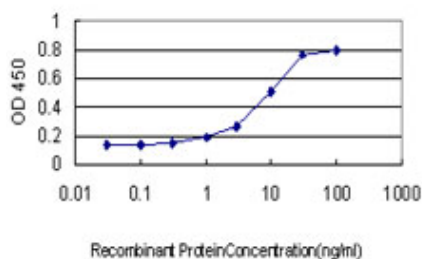
Antibody Reactive Against Recombinant Protein. Western Blot detection against Immunogen (36.41 KDa) .



Western Blot analysis of ADAM12 expression in transfected 293T cell line by ADAM12 monoclonal antibody (M01), clone 1G3.

Lane 1: ADAM12 transfected lysate (Predicted MW: 80.4 KDa).

Lane 2: Non-transfected lysate.



Detection limit for recombinant GST tagged ADAM12 is approximately 0.3ng/ml as a capture antibody.

Please note: All products are 'FOR RESEARCH USE ONLY. NOT FOR USE IN DIAGNOSTIC OR THERAPEUTIC PROCEDURES'.