

ADAM2 Antibody (monoclonal) (M01)

Mouse monoclonal antibody raised against a partial recombinant ADAM2.

Catalog # AT1043a

Product Information

| | |
|-------------------|---------------------------|
| Application | WB, E |
| Primary Accession | Q99965 |
| Other Accession | NM_001464 |
| Reactivity | Human |
| Host | mouse |
| Clonality | monoclonal |
| Isotype | IgG2a Kappa |
| Clone Names | 4A2 |
| Calculated MW | 82457 |

Additional Information

| | |
|--------------------|---|
| Gene ID | 2515 |
| Other Names | Disintegrin and metalloproteinase domain-containing protein 2, ADAM 2, Cancer/testis antigen 15, CT15, Fertilin subunit beta, PH-30, PH30, PH30-beta, ADAM2, FTNB |
| Target/Specificity | ADAM2 (NP_001455, 376 a.a. ~ 475 a.a) partial recombinant protein with GST tag. MW of the GST tag alone is 26 KDa. |
| Dilution | WB~~1:500~1000 E~~N/A |
| Format | Clear, colorless solution in phosphate buffered saline, pH 7.2 . |
| Storage | Store at -20°C or lower. Aliquot to avoid repeated freezing and thawing. |
| Precautions | ADAM2 Antibody (monoclonal) (M01) is for research use only and not for use in diagnostic or therapeutic procedures. |

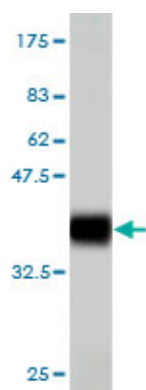
Background

This gene encodes a member of the ADAM (a disintegrin and metalloprotease domain) family. Members of this family are membrane-anchored proteins structurally related to snake venom disintegrins, and have been implicated in a variety of biological processes involving cell-cell and cell-matrix interactions, including fertilization, muscle development, and neurogenesis. This member is a subunit of an integral sperm membrane glycoprotein called fertilin, which plays an important role in sperm-egg interactions.

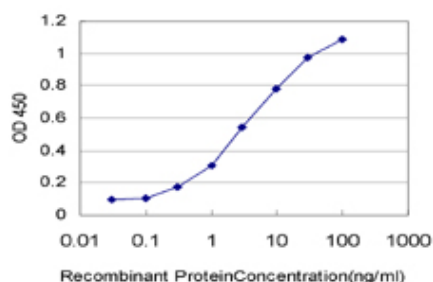
References

Association between fertilin beta, protamines 1 and 2 and spermatid-specific linker histone H1-like protein mRNA levels, fertilization ability of human spermatozoa, and quality of preimplantation embryos. Depa-Martyn?w M, et al. *Folia Histochem Cytobiol*, 2007. PMID 18292840. The status, quality, and expansion of the NIH full-length cDNA project: the Mammalian Gene Collection (MGC). Gerhard DS, et al. *Genome Res*, 2004 Oct. PMID 15489334. Generation and initial analysis of more than 15,000 full-length human and mouse cDNA sequences. Strausberg RL, et al. *Proc Natl Acad Sci U S A*, 2002 Dec 24. PMID 12477932. Functional classification of ADAMs based on a conserved motif for binding to integrin alpha 9beta 1: implications for sperm-egg binding and other cell interactions. Eto K, et al. *J Biol Chem*, 2002 May 17. PMID 11882657. Calmegin is required for fertilin alpha/beta heterodimerization and sperm fertility. Ikawa M, et al. *Dev Biol*, 2001 Dec 1. PMID 11784061.

Images



Antibody Reactive Against Recombinant Protein. Western Blot detection against Immunogen (36.74 KDa) .



Detection limit for recombinant GST tagged ADAM2 is approximately 0.1 ng/ml as a capture antibody.

Please note: All products are 'FOR RESEARCH USE ONLY. NOT FOR USE IN DIAGNOSTIC OR THERAPEUTIC PROCEDURES'.