

# ADAMDEC1 Antibody (monoclonal) (M01)

Mouse monoclonal antibody raised against a partial recombinant ADAMDEC1.

Catalog # AT1045a

## Product Information

---

<b>Application</b>	WB, IHC, E
<b>Primary Accession</b>	<a href="#">O15204</a>
<b>Other Accession</b>	<a href="#">NM_014479</a>
<b>Reactivity</b>	Human
<b>Host</b>	Mouse
<b>Clonality</b>	monoclonal
<b>Isotype</b>	IgG2a Kappa
<b>Clone Names</b>	6C4
<b>Calculated MW</b>	52775

## Additional Information

---

<b>Gene ID</b>	27299
<b>Other Names</b>	ADAM DEC1, 3424-, A disintegrin and metalloproteinase domain-like protein decysin-1, ADAM-like protein decysin-1, ADAMDEC1
<b>Target/Specificity</b>	ADAMDEC1 (NP_055294, 361 a.a. ~ 470 a.a) partial recombinant protein with GST tag. MW of the GST tag alone is 26 KDa.
<b>Dilution</b>	WB~~1:500~1000 IHC~~1:100~500 E~~N/A
<b>Format</b>	Clear, colorless solution in phosphate buffered saline, pH 7.2 .
<b>Storage</b>	Store at -20°C or lower. Aliquot to avoid repeated freezing and thawing.
<b>Precautions</b>	ADAMDEC1 Antibody (monoclonal) (M01) is for research use only and not for use in diagnostic or therapeutic procedures.

## Background

---

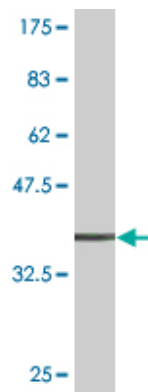
This encoded protein is thought to be a secreted protein belonging to the disintegrin metalloproteinase family. Its expression is upregulated during dendritic cells maturation. This protein may play an important role in dendritic cell function and their interactions with germinal center T cells.

## References

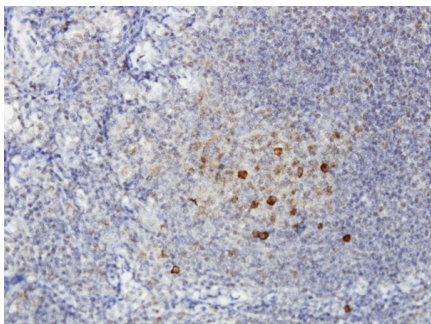
---

1. Gene Expression Profiling Identifies MMP-12 and ADAMDEC1 as Potential Pathogenic Mediators of Pulmonary Sarcoidosis. Crouser ED, Culver DA, Knox KS, Julian MW, Shao G, Abraham S, Liyanarachchi S, Macre JE, Wewers MD, Gavrillin MA, Ross P, Abbas A, Eng C. Am J Respir Crit Care Med. 2009 May

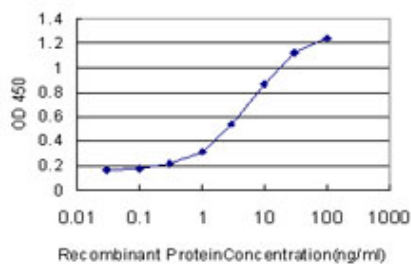
Images



Antibody Reactive Against Recombinant Protein.Western Blot detection against Immunogen (37.84 KDa) .



Immunoperoxidase of monoclonal antibody to ADAMDEC1 on formalin-fixed paraffin-embedded human tonsil. [antibody concentration 3 ug/ml]



Detection limit for recombinant GST tagged ADAMDEC1 is approximately 0.3ng/ml as a capture antibody.

Please note: All products are 'FOR RESEARCH USE ONLY. NOT FOR USE IN DIAGNOSTIC OR THERAPEUTIC PROCEDURES'.