

ADAMDEC1 Antibody (monoclonal) (M03)

Mouse monoclonal antibody raised against a partial recombinant ADAMDEC1.

Catalog # AT1046a

Product Information

Application	WB, E
Primary Accession	O15204
Other Accession	NM_014479
Reactivity	Human
Host	mouse
Clonality	monoclonal
Isotype	IgG2a Kappa
Clone Names	1G2
Calculated MW	52775

Additional Information

Gene ID	27299
Other Names	ADAM DEC1, 3424-, A disintegrin and metalloproteinase domain-like protein decysin-1, ADAM-like protein decysin-1, ADAMDEC1
Target/Specificity	ADAMDEC1 (NP_055294, 361 a.a. ~ 470 a.a) partial recombinant protein with GST tag. MW of the GST tag alone is 26 KDa.
Dilution	WB~~1:500~1000 E~~N/A
Format	Clear, colorless solution in phosphate buffered saline, pH 7.2 .
Storage	Store at -20°C or lower. Aliquot to avoid repeated freezing and thawing.
Precautions	ADAMDEC1 Antibody (monoclonal) (M03) is for research use only and not for use in diagnostic or therapeutic procedures.

Background

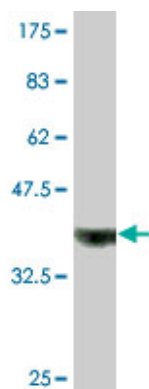
This encoded protein is thought to be a secreted protein belonging to the disintegrin metalloproteinase family. Its expression is upregulated during dendritic cells maturation. This protein may play an important role in dendritic cell function and their interactions with germinal center T cells.

References

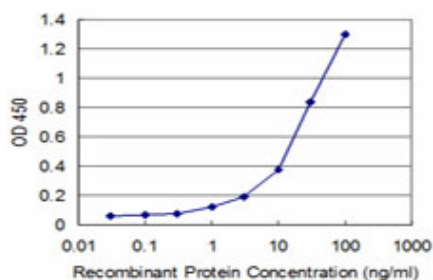
Gene expression profiling identifies MMP-12 and ADAMDEC1 as potential pathogenic mediators of pulmonary sarcoidosis. Crouser ED, et al. Am J Respir Crit Care Med, 2009 May 15. PMID 19218196. Association of ADAMDEC1 haplotype with high factor VIII levels in venous thromboembolism.

Berger M, et al. Thromb Haemost, 2008 May. PMID 18449420. Human plasma N-glycoproteome analysis by immunoaffinity subtraction, hydrazide chemistry, and mass spectrometry. Liu T, et al. J Proteome Res, 2005 Nov-Dec. PMID 16335952. The status, quality, and expansion of the NIH full-length cDNA project: the Mammalian Gene Collection (MGC). Gerhard DS, et al. Genome Res, 2004 Oct. PMID 15489334. Inverse regulation of the ADAM-family members, decysin and MADDAM/ADAM19 during monocyte differentiation. Fritsche J, et al. Immunology, 2003 Dec. PMID 14632642.

Images



Antibody Reactive Against Recombinant Protein. Western Blot detection against Immunogen (37.84 KDa) .



Detection limit for recombinant GST tagged ADAMDEC1 is approximately 1ng/ml as a capture antibody.

Please note: All products are 'FOR RESEARCH USE ONLY. NOT FOR USE IN DIAGNOSTIC OR THERAPEUTIC PROCEDURES'.