

ADRM1 Antibody (monoclonal) (M01)

Mouse monoclonal antibody raised against a full length recombinant ADRM1.

Catalog # AT1060a

Product Information

Application	WB, IF, IP, E
Primary Accession	Q16186
Other Accession	BC017245
Reactivity	Human
Host	mouse
Clonality	monoclonal
Isotype	IgG2b Kappa
Clone Names	3C6
Calculated MW	42153

Additional Information

Gene ID	11047
Other Names	Proteasomal ubiquitin receptor ADRM1, 110 kDa cell membrane glycoprotein, Gp110, Adhesion-regulating molecule 1, ARM-1, Proteasome regulatory particle non-ATPase 13, hRpn13, Rpn13 homolog, ADRM1, GP110
Target/Specificity	ADRM1 (AAH17245.1, 18 a.a. ~ 407 a.a) full-length recombinant protein with GST tag. MW of the GST tag alone is 26 KDa.
Dilution	WB~~1:500~1000 IF~~1:50~200 IP~~N/A E~~N/A
Format	Clear, colorless solution in phosphate buffered saline, pH 7.2 .
Storage	Store at -20°C or lower. Aliquot to avoid repeated freezing and thawing.
Precautions	ADRM1 Antibody (monoclonal) (M01) is for research use only and not for use in diagnostic or therapeutic procedures.

Background

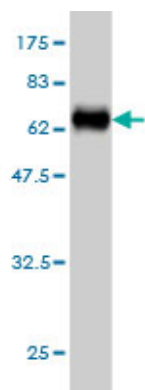
The protein encoded by this gene is an integral plasma membrane protein which promotes cell adhesion. The encoded protein is thought to undergo O-linked glycosylation. Expression of this gene has been shown to be induced by gamma interferon in some cancer cells. Two transcript variants encoding the same protein have been found for this gene.

References

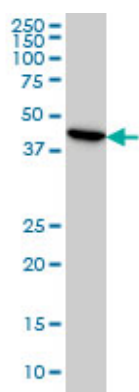
1.Phospho-?GNp63 ? /Rpn13-dependent regulation of LKB1 degradation modulates autophagy in cancer

cells.Huang Y, Ratovitski EA.Aging (Albany NY). 2010 Dec;2(12):959-68.2.Phosphorylated TP63 Induces Transcription of RPN13, Leading to NOS2 Protein Degradation.Huang Y, Ratovitski EA.J Biol Chem. 2010 Dec 31;285(53):41422-31. Epub 2010 Oct 19.3.Biological and Molecular Heterogeneity of Breast Cancers Correlates with Their Cancer Stem Cell Content.Pece S, Tosoni D, Confalonieri S, Mazzarol G, Vecchi M, Ronzoni S, Bernard L, Viale G, Pelicci PG, Di Fiore PP.Cell. 2010 Jan 8;140(1):62-73.

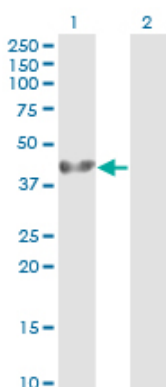
Images



Antibody Reactive Against Recombinant Protein.Western Blot detection against Immunogen (68.64 KDa) .

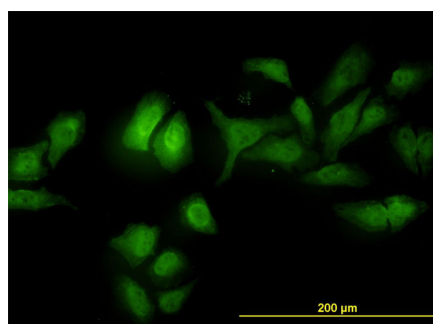


ADRM1 monoclonal antibody (M01), clone 3C6 Western Blot analysis of ADRM1 expression in HeLa ((Cat # AT1060a)



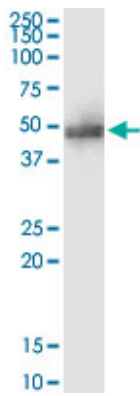
Western Blot analysis of ADRM1 expression in transfected 293T cell line by ADRM1 monoclonal antibody (M01), clone 3C6.

Lane 1: ADRM1 transfected lysate(42.2 KDa).
Lane 2: Non-transfected lysate.

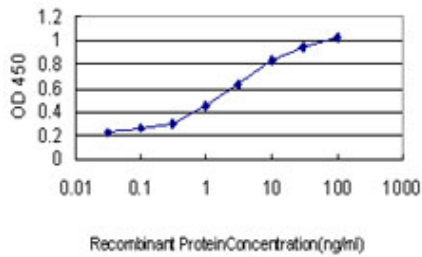


Immunofluorescence of monoclonal antibody to ADRM1 on HeLa cell. [antibody concentration 10 ug/ml]

Immunoprecipitation of ADRM1 transfected lysate using



anti-ADRM1 monoclonal antibody and Protein A Magnetic Bead ([U0007](#)), and immunoblotted with ADRM1 monoclonal antibody.



Detection limit for recombinant GST tagged ADRM1 is approximately 0.1 ng/ml as a capture antibody.

Please note: All products are 'FOR RESEARCH USE ONLY. NOT FOR USE IN DIAGNOSTIC OR THERAPEUTIC PROCEDURES'.