

AF1Q Antibody (monoclonal) (M01)

Mouse monoclonal antibody raised against a full length recombinant AF1Q.
Catalog # AT1064a

Product Information

Application	WB, E
Primary Accession	Q13015
Other Accession	BC009624
Reactivity	Human
Host	mouse
Clonality	monoclonal
Isotype	IgG2a kappa
Clone Names	2A9-1B7
Calculated MW	10061

Additional Information

Gene ID	10962
Other Names	Protein AF1q, MLLT11, AF1Q
Target/Specificity	AF1Q (AAH09624, 1 a.a. ~ 90 a.a) full-length recombinant protein with GST tag. MW of the GST tag alone is 26 KDa.
Dilution	WB~~1:500~1000 E~~N/A
Format	Clear, colorless solution in phosphate buffered saline, pH 7.2 .
Storage	Store at -20°C or lower. Aliquot to avoid repeated freezing and thawing.
Precautions	AF1Q Antibody (monoclonal) (M01) is for research use only and not for use in diagnostic or therapeutic procedures.

Background

The gene variously symbolized ALL1, HRX, or MLL located on 11q23 has been demonstrated to be fused with a number of translocation partners in cases of leukemia. t(1;11)(q21;q23) translocations that fused the MLL gene to a gene on chromosomal band 1q21 in 2 infants with acute myelomonocytic leukemia have been demonstrated. The N-terminal portion of the MLL gene is critical for leukemogenesis in translocations involving band 11q23. This gene encodes 90 amino acids. It was found to be highly expressed in the thymus but not in peripheral lymphoid tissues. In contrast to its restricted distribution in normal hematopoietic tissue, this gene was expressed in all leukemic cell lines tested.

References

1. MLLT11/AF1q is differentially expressed in maturing neurons during development. Yamada M, Clark J, Iulianella A. *Gene Expr Patterns*. 2014 May 16. pii: S1567-133X(14)00038-6. doi: 10.1016/j.gep.2014.05.001.

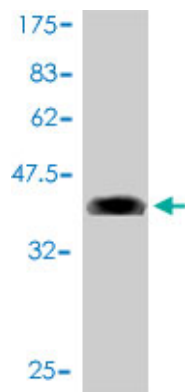
2. AF1q: A Novel Mediator of Basal and 4-HPR-Induced Apoptosis in Ovarian Cancer Cells. Tiberio P, Cavadini E, Callari M, Daidone MG, Appierto V. *PLoS One*. 2012;7(6):e39968. Epub 2012 Jun 26.

3. AF1q/MLLT11 regulates the emergence of human prothymocytes through cooperative interaction with the Notch signaling pathway. Parcelier A, Maharzi N, Delord M, Robledo-Sarmiento M, Nelson E, Belakhdar-Mekid H, Pla M, Kuranda K, Parietti V, Goodhardt M, Legrand N, Bernstein ID, Gluckman JC, Sigaux F, Canque B. *Blood*. 2011 Aug 18;118(7):1784-96. Epub 2011 Jun 28.

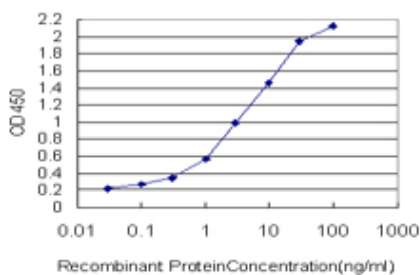
4. Oncogene AF1q enhances doxorubicin-induced apoptosis through BAD-mediated mitochondrial apoptotic pathway. Co NN, Tsang WP, Wong TW, Cheung HH, Tsang TY, Kong SK, Kwok TT. *Mol Cancer Ther*. 2008 Oct;7(10):3160-8.

5. Identification of the functional role of AF1Q in the progression of breast cancer. Chang XZ, Li DQ, Hou YF, Wu J, Lu JS, Di GH, Jin W, Ou ZL, Shen ZZ, Shao ZM. *Breast Cancer Res Treat*. 2008 Sep;111(1):65-78. Epub 2007 Oct 11.

Images



Antibody Reactive Against Recombinant Protein. Western Blot detection against Immunogen (35.64 KDa).



Detection limit for recombinant GST tagged MLLT11 is approximately 0.03ng/ml as a capture antibody.

Citations

- [AF1q is a universal marker of neuroblastoma that sustains N-Myc expression and drives tumorigenesis](#)

Please note: All products are 'FOR RESEARCH USE ONLY. NOT FOR USE IN DIAGNOSTIC OR THERAPEUTIC PROCEDURES'.