

AFP Antibody (monoclonal) (M01)

Mouse monoclonal antibody raised against a partial recombinant AFP.

Catalog # AT1066a

Product Information

Application	WB, IF, IP, E
Primary Accession	P02771
Other Accession	BC027881
Reactivity	Human
Host	mouse
Clonality	monoclonal
Isotype	IgG
Clone Names	1G7
Calculated MW	68678

Additional Information

Gene ID	174
Other Names	Alpha-fetoprotein, Alpha-1-fetoprotein, Alpha-fetoglobulin, AFP, HPAFP
Target/Specificity	AFP (AAH27881, 500 a.a. ~ 609 a.a) partial recombinant protein with GST tag. MW of the GST tag alone is 26 KDa.
Dilution	WB~~1:500~1000 IF~~1:50~200 IP~~N/A E~~N/A
Format	Clear, colorless solution in phosphate buffered saline, pH 7.2 .
Storage	Store at -20°C or lower. Aliquot to avoid repeated freezing and thawing.
Precautions	AFP Antibody (monoclonal) (M01) is for research use only and not for use in diagnostic or therapeutic procedures.

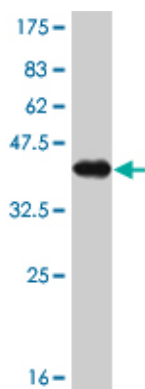
Background

This gene encodes alpha-fetoprotein, a major plasma protein produced by the yolk sac and the liver during fetal life. Alpha-fetoprotein expression in adults is often associated with hepatoma or teratoma. However, hereditary persistence of alpha-fetoprotein may also be found in individuals with no obvious pathology. The protein is thought to be the fetal counterpart of serum albumin, and the alpha-fetoprotein and albumin genes are present in tandem in the same transcriptional orientation on chromosome 4. Alpha-fetoprotein is found in monomeric as well as dimeric and trimeric forms, and binds copper, nickel, fatty acids and bilirubin. The level of alpha-fetoprotein in amniotic fluid is used to measure renal loss of protein to screen for spina bifida and anencephaly.

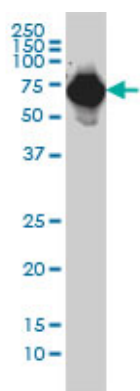
References

1.Immunodevice for simultaneous detection of two relevant tumor markers based on separation of different microparticles by dielectrophoresis.Ramon-Azcon J, Yasukawa T, Mizutani F.Biosens Bioelectron. 2011 Aug 4. [Epub ahead of print]

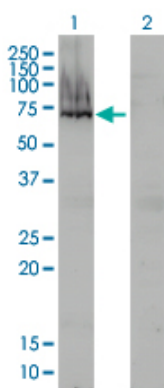
Images



Antibody Reactive Against Recombinant Protein.Western Blot detection against Immunogen (37.84 KDa) .

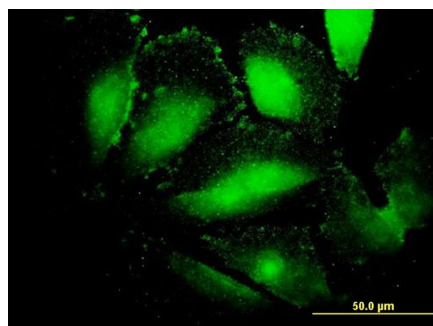


AFP monoclonal antibody (M01), clone 1G7 Western Blot analysis of AFP expression in HepG2 ((Cat # AT1066a)



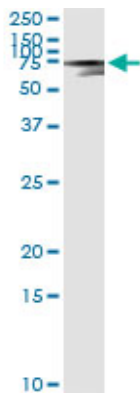
Western Blot analysis of AFP expression in transfected 293T cell line by AFP monoclonal antibody (M01), clone 1G7.

Lane 1: AFP transfected lysate(69 KDa).
Lane 2: Non-transfected lysate.

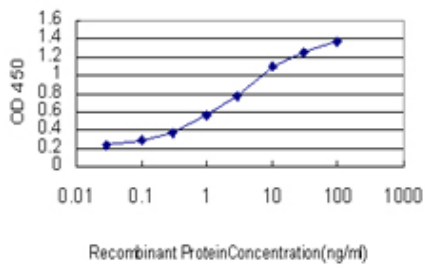


Immunofluorescence of monoclonal antibody to AFP on HepG2 cell. [antibody concentration 30 ug/ml]

Immunoprecipitation of AFP transfected lysate using anti-AFP monoclonal antibody and Protein A Magnetic Bead ([U0007](#)), and immunoblotted with AFP MaxPab



rabbit polyclonal antibody.



Detection limit for recombinant GST tagged AFP is approximately 0.03ng/ml as a capture antibody.

Please note: All products are 'FOR RESEARCH USE ONLY. NOT FOR USE IN DIAGNOSTIC OR THERAPEUTIC PROCEDURES'.