

## AKT2 Antibody (monoclonal) (M03)

Mouse monoclonal antibody raised against a partial recombinant AKT2.

Catalog # AT1101a

### Product Information

---

<b>Application</b>	WB, IF, E
<b>Primary Accession</b>	<a href="#">P31751</a>
<b>Other Accession</b>	<a href="#">M95936</a>
<b>Reactivity</b>	Human, Mouse, Rat
<b>Host</b>	mouse
<b>Clonality</b>	monoclonal
<b>Isotype</b>	IgG1 Kappa
<b>Clone Names</b>	1D9
<b>Calculated MW</b>	55769

### Additional Information

---

<b>Gene ID</b>	208
<b>Other Names</b>	RAC-beta serine/threonine-protein kinase, Protein kinase Akt-2, Protein kinase B beta, PKB beta, RAC-PK-beta, AKT2
<b>Target/Specificity</b>	AKT2 (AAA58364, 100 a.a. ~ 189 a.a) partial recombinant protein with GST tag. MW of the GST tag alone is 26 KDa.
<b>Dilution</b>	WB~~1:500~1000 IF~~1:50~200 E~~N/A
<b>Format</b>	Clear, colorless solution in phosphate buffered saline, pH 7.2 .
<b>Storage</b>	Store at -20°C or lower. Aliquot to avoid repeated freezing and thawing.
<b>Precautions</b>	AKT2 Antibody (monoclonal) (M03) is for research use only and not for use in diagnostic or therapeutic procedures.

### Background

---

This gene is a putative oncogene encoding a protein belonging to a subfamily of serine/threonine kinases containing SH2-like (Src homology 2-like) domains. The gene was shown to be amplified and overexpressed in 2 of 8 ovarian carcinoma cell lines and 2 of 15 primary ovarian tumors. Overexpression contributes to the malignant phenotype of a subset of human ductal pancreatic cancers. The encoded protein is a general protein kinase capable of phosphorylating several known proteins.

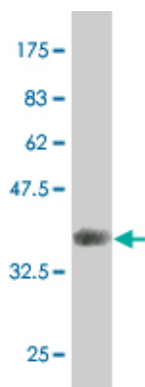
### References

---

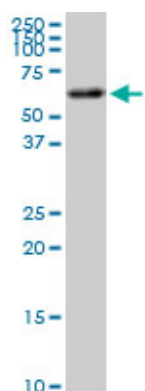
1. Multiple defects in negative regulation of the PKB/Akt pathway sensitise human cancer cells to the

antiproliferative effect of non-steroidal anti-inflammatory drugs. Lincova E, Hampl A, Pernicova Z, Staršíchová A, Kráma P, Machala M, Kozubík A, Souček K. *Biochem Pharmacol.* 2009 Sep 15;78(6):561-72. Epub 2009 May 9.

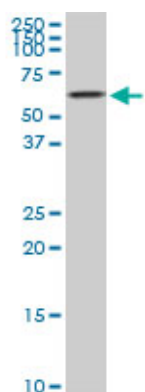
## Images



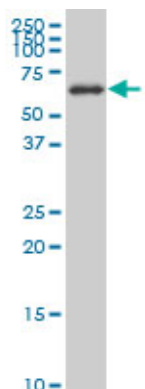
Antibody Reactive Against Recombinant Protein. Western Blot detection against Immunogen (35.53 KDa) .



AKT2 monoclonal antibody (M03), clone 1D9. Western Blot analysis of AKT2 expression in PC-12 (Cat # AT1101a )

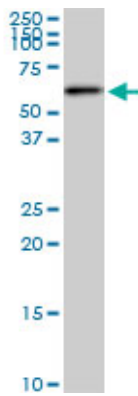


AKT2 monoclonal antibody (M03), clone 1D9. Western Blot analysis of AKT2 expression in Raw 264.7 (Cat # AT1101a )

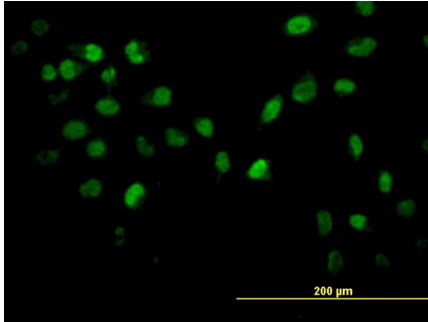


AKT2 monoclonal antibody (M03), clone 1D9 Western Blot analysis of AKT2 expression in Jurkat (Cat # AT1101a )

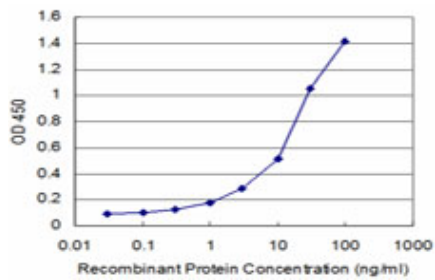
AKT2 monoclonal antibody (M03), clone 1D9. Western



Blot analysis of AKT2 expression in NIH/3T3((Cat # AT1101a )



Immunofluorescence of monoclonal antibody to AKT2 on HeLa cell. [antibody concentration 10 ug/ml]



Detection limit for recombinant GST tagged AKT2 is approximately 1ng/ml as a capture antibody.

Please note: All products are 'FOR RESEARCH USE ONLY. NOT FOR USE IN DIAGNOSTIC OR THERAPEUTIC PROCEDURES'.