

ALAS1 Antibody (monoclonal) (M01)

Mouse monoclonal antibody raised against a partial recombinant ALAS1.

Catalog # AT1105a

Product Information

Application	WB, E
Primary Accession	P13196
Other Accession	NM_000688
Reactivity	Human
Host	mouse
Clonality	monoclonal
Isotype	IgG2a Kappa
Clone Names	3G10
Calculated MW	70581

Additional Information

Gene ID	211
Other Names	5-aminolevulinate synthase, nonspecific, mitochondrial, ALAS-H, 5-aminolevulinic acid synthase 1, Delta-ALA synthase 1, Delta-aminolevulinate synthase 1, ALAS1, ALAS3, ALASH
Target/Specificity	ALAS1 (NP_000679, 1 a.a. ~ 98 a.a) partial recombinant protein with GST tag. MW of the GST tag alone is 26 KDa.
Dilution	WB~~1:500~1000 E~~N/A
Format	Clear, colorless solution in phosphate buffered saline, pH 7.2 .
Storage	Store at -20°C or lower. Aliquot to avoid repeated freezing and thawing.
Precautions	ALAS1 Antibody (monoclonal) (M01) is for research use only and not for use in diagnostic or therapeutic procedures.

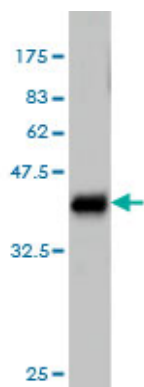
Background

Delta-aminolevulinate synthase (ALAS; EC 2.3.1.37) catalyzes the condensation of glycine with succinyl-CoA to form delta-aminolevulinic acid. This nuclear-encoded mitochondrial enzyme is the first and rate-limiting enzyme in the mammalian heme biosynthetic pathway. There are 2 tissue-specific isozymes: a housekeeping enzyme encoded by the ALAS1 gene and an erythroid tissue-specific enzyme encoded by ALAS2 (MIM 301300).

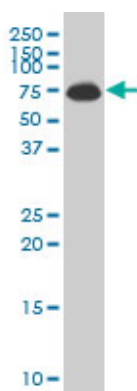
References

1.PGC-1{alpha} is not mandatory for exercise- and training-induced adaptive gene responsens in mouse skeletal muscle.Leick L, Wojtaszewski JF, Johansen ST, Kiilerich K, Comes G, Hellsten Y, Hidalgo J, Pilegaard H.Am J Physiol Endocrinol Metab. 2008 Feb;294(2):E463-74. Epub 2007 Dec 11.

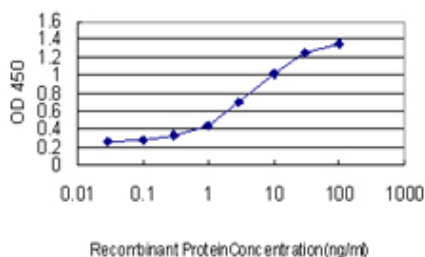
Images



Antibody Reactive Against Recombinant Protein.Western Blot detection against Immunogen (36.52 KDa) .



ALAS1 monoclonal antibody (M01), clone 3G10 Western Blot analysis of ALAS1 expression in JAR ((Cat # AT1105a)



Detection limit for recombinant GST tagged ALAS1 is approximately 0.1ng/ml as a capture antibody.

Please note: All products are 'FOR RESEARCH USE ONLY. NOT FOR USE IN DIAGNOSTIC OR THERAPEUTIC PROCEDURES'.