

ALB Antibody (monoclonal) (M01)

Mouse monoclonal antibody raised against a full length recombinant ALB.

Catalog # AT1109a

Product Information

Application	WB, IHC, IP, E
Primary Accession	P02768
Other Accession	BC034023
Reactivity	Human
Host	mouse
Clonality	monoclonal
Isotype	IgG1 kappa
Clone Names	1G12-1B3
Calculated MW	69367

Additional Information

Gene ID	213
Other Names	Serum albumin, ALB
Target/Specificity	ALB (AAH34023, 19 a.a. ~ 609 a.a) full-length recombinant protein with GST tag. MW of the GST tag alone is 26 KDa.
Dilution	WB~~1:500~1000 IHC~~1:100~500 IP~~N/A E~~N/A
Format	Clear, colorless solution in phosphate buffered saline, pH 7.2 .
Storage	Store at -20°C or lower. Aliquot to avoid repeated freezing and thawing.
Precautions	ALB Antibody (monoclonal) (M01) is for research use only and not for use in diagnostic or therapeutic procedures.

Background

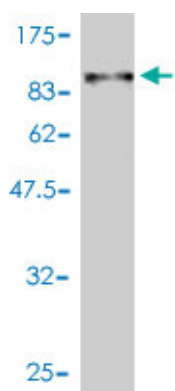
Albumin is a soluble, monomeric protein which comprises about one-half of the blood serum protein. Albumin functions primarily as a carrier protein for steroids, fatty acids, and thyroid hormones and plays a role in stabilizing extracellular fluid volume. Albumin is a globular unglycosylated serum protein of molecular weight 65,000. Albumin is synthesized in the liver as prealbumin which has an N-terminal peptide that is removed before the nascent protein is released from the rough endoplasmic reticulum. The product, proalbumin, is in turn cleaved in the Golgi vesicles to produce the secreted albumin.

References

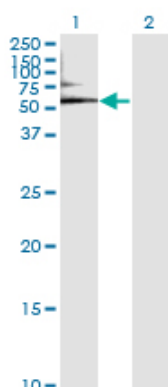
- 1.Hypoalbuminemia in early onset dentatorubral-pallidoluysian atrophy due to leakage of albumin in

multiple organs.Nagai S, Saito Y, Endo Y, Saito T, Sugai K, Ishiyama A, Komaki H, Nakagawa E, Sasaki M, Ito K, Saito Y, Sukigara S, Ito M, Goto YI, Ito S, Matsuoka K.J Neurol. 2012 Dec 23.2.S-Adenosylmethionine Dependent Protein Methylation is Required for Expression of Selenoprotein P and Gluconeogenic Enzymes in Human Hepatocytes.Jackson MI, Cao J, Zeng H, Uthus EO, Combs GF Jr.J Biol Chem. 2012 Aug 29.

Images



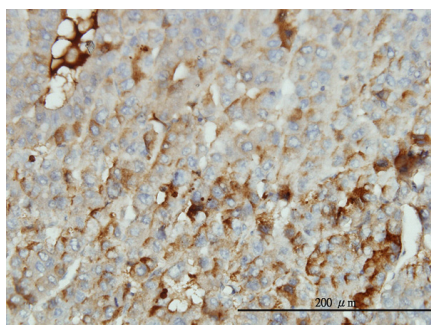
Antibody Reactive Against Recombinant Protein.Western Blot detection against Immunogen (90.75 KDa) .



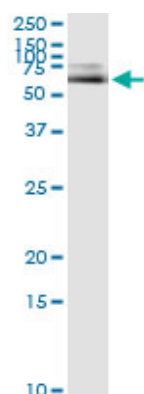
Western Blot analysis of ALB expression in transfected 293T cell line by ALB monoclonal antibody (M01), clone 1G12-1B3.

Lane 1: ALB transfected lysate(69.4 KDa).

Lane 2: Non-transfected lysate.

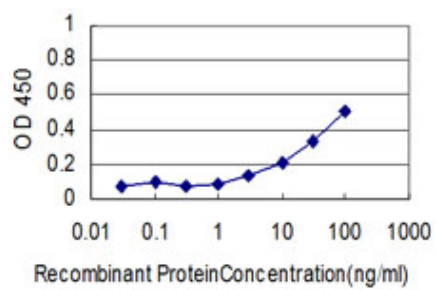


Immunoperoxidase of monoclonal antibody to ALB on formalin-fixed paraffin-embedded human hepatocellular carcinoma tissue. [antibody concentration 3 ug/ml]



Immunoprecipitation of ALB transfected lysate using anti-ALB monoclonal antibody and Protein A Magnetic Bead ([U0007](#)), and immunoblotted with ALB MaxPab rabbit polyclonal antibody.

Detection limit for recombinant GST tagged ALB is approximately 1ng/ml as a capture antibody.



Please note: All products are 'FOR RESEARCH USE ONLY. NOT FOR USE IN DIAGNOSTIC OR THERAPEUTIC PROCEDURES'.