

ALDOA Antibody (monoclonal) (M02)

Mouse monoclonal antibody raised against a full length recombinant ALDOA.

Catalog # AT1116a

Product Information

Application	WB, IF
Primary Accession	P04075
Other Accession	BC010660
Reactivity	Human
Host	mouse
Clonality	monoclonal
Isotype	IgG1 kappa
Clone Names	3C12-6D11
Calculated MW	39420

Additional Information

Gene ID	226
Other Names	Fructose-bisphosphate aldolase A, Lung cancer antigen NY-LU-1, Muscle-type aldolase, ALDOA, ALDA
Target/Specificity	ALDOA (AAH10660.1, 1 a.a. ~ 364 a.a) full-length recombinant protein with GST tag. MW of the GST tag alone is 26 KDa.
Dilution	WB~~1:500~1000 IF~~1:50~200
Format	Clear, colorless solution in phosphate buffered saline, pH 7.2 .
Storage	Store at -20°C or lower. Aliquot to avoid repeated freezing and thawing.
Precautions	ALDOA Antibody (monoclonal) (M02) is for research use only and not for use in diagnostic or therapeutic procedures.

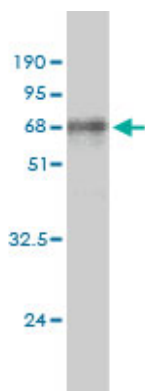
Background

This gene product, Aldolase A (fructose-bisphosphate aldolase) is a glycolytic enzyme that catalyzes the reversible conversion of fructose-1,6-bisphosphate to glyceraldehyde 3-phosphate and dihydroxyacetone phosphate. Three aldolase isozymes (A, B, and C), encoded by three different genes, are differentially expressed during development. Aldolase A is found in the developing embryo and is produced in even greater amounts in adult muscle. Aldolase A expression is repressed in adult liver, kidney and intestine and similar to aldolase C levels in brain and other nervous tissue. Aldolase A deficiency has been associated with myopathy and hemolytic anemia. Alternative splicing of this gene results in multiple transcript variants which encode the same protein.

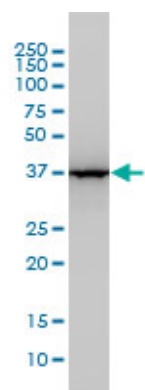
References

1. Grade-dependent proteomic characterization of kidney cancer. Perroud B, Ishimaru T, Borowsky AD, Weiss RH. Mol Cell Proteomics. 2009 May;8(5):971-85. Epub 2009 Jan 21.

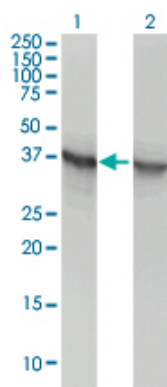
Images



Antibody Reactive Against Recombinant Protein. Western Blot detection against Immunogen (65.78 KDa) .

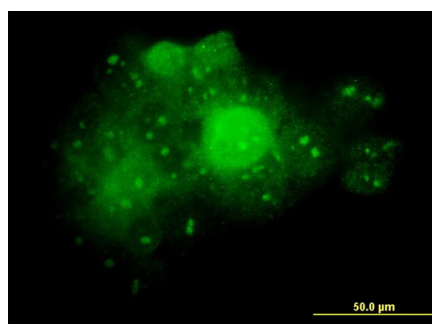


ALDOA monoclonal antibody (M01), clone 3C12-6D11
Western Blot analysis of ALDOA expression in A-431 (Cat # AT1116a)



Western Blot analysis of ALDOA expression in transfected 293T cell line by ALDOA monoclonal antibody (M02), clone 3C12-6D11.

Lane 1: ALDOA transfected lysate (39 KDa).
Lane 2: Non-transfected lysate.



Immunofluorescence of monoclonal antibody to ALDOA on A-431 cell. [antibody concentration 10 ug/ml]

Citations

- [Key proteins of proteome underlying sperm malformation of rats exposed to low fenvalerate doses are highly related to P53](#)

Please note: All products are 'FOR RESEARCH USE ONLY. NOT FOR USE IN DIAGNOSTIC OR THERAPEUTIC PROCEDURES'.