

ALPPL2 Antibody (monoclonal) (M07)

Mouse monoclonal antibody raised against a partial recombinant ALPPL2.

Catalog # AT1125a

Product Information

Application	WB, IHC, IP
Primary Accession	P10696
Other Accession	NM_031313
Reactivity	Human
Host	Mouse
Clonality	monoclonal
Isotype	IgG2a Kappa
Clone Names	2B3
Calculated MW	57377

Additional Information

Gene ID	251
Other Names	Alkaline phosphatase, placental-like, ALP-1, Alkaline phosphatase Nagao isozyme, Germ cell alkaline phosphatase, GCAP, Placental alkaline phosphatase-like, PLAP-like, ALPPL2, ALPPL
Target/Specificity	ALPPL2 (NP_112603, 365 a.a. ~ 454 a.a) partial recombinant protein with GST tag. MW of the GST tag alone is 26 KDa.
Dilution	WB~~1:500~1000 IHC~~1:100~500 IP~~N/A
Format	Clear, colorless solution in phosphate buffered saline, pH 7.2 .
Storage	Store at -20°C or lower. Aliquot to avoid repeated freezing and thawing.
Precautions	ALPPL2 Antibody (monoclonal) (M07) is for research use only and not for use in diagnostic or therapeutic procedures.

Background

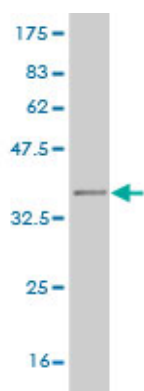
There are at least four distinct but related alkaline phosphatases: intestinal, placental, placental-like, and liver/bone/kidney (tissue non-specific). The product of this gene is a membrane bound glycosylated enzyme, localized to testis, thymus and certain germ cell tumors, that is closely related to both the placental and intestinal forms of alkaline phosphatase.

References

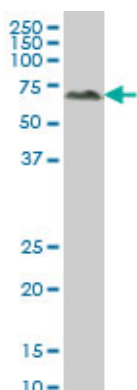
Premature induction of hypertrophy during in vitro chondrogenesis of human mesenchymal stem cells

correlates with calcification and vascular invasion after ectopic transplantation in SCID mice. Pelttari K, et al. Arthritis Rheum, 2006 Oct. PMID 17009260. Involvement of intestinal alkaline phosphatase in serum apolipoprotein B-48 level and its association with ABO and secretor blood group types. Nakano T, et al. Biochem Biophys Res Commun, 2006 Mar 3. PMID 16412386. Diversification of transcriptional modulation: large-scale identification and characterization of putative alternative promoters of human genes. Kimura K, et al. Genome Res, 2006 Jan. PMID 16344560. Generation and annotation of the DNA sequences of human chromosomes 2 and 4. Hillier LW, et al. Nature, 2005 Apr 7. PMID 15815621. The status, quality, and expansion of the NIH full-length cDNA project: the Mammalian Gene Collection (MGC). Gerhard DS, et al. Genome Res, 2004 Oct. PMID 15489334.

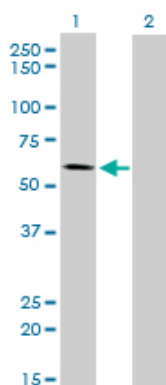
Images



Antibody Reactive Against Recombinant Protein. Western Blot detection against Immunogen (35.64 KDa) .



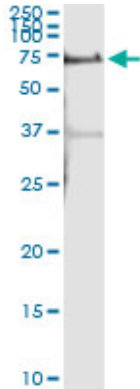
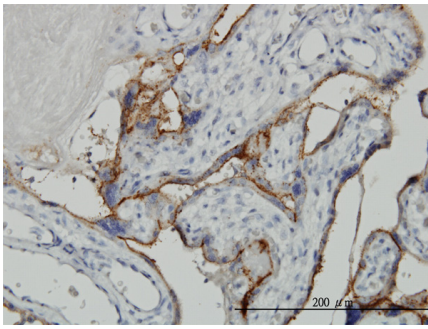
ALPPL2 monoclonal antibody (M07), clone 2B3 Western Blot analysis of ALPPL2 expression in A-431 (Cat # AT1125a)



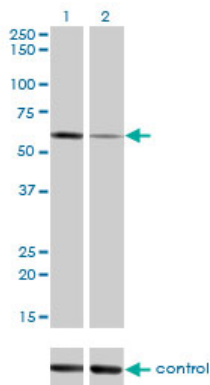
Western Blot analysis of ALPPL2 expression in transfected 293T cell line by ALPPL2 monoclonal antibody (M07), clone 2B3.

Lane 1: ALPPL2 transfected lysate(57.5 KDa).
Lane 2: Non-transfected lysate.

Immunoperoxidase of monoclonal antibody to ALPPL2 on formalin-fixed paraffin-embedded human placenta. [antibody concentration 3 ug/ml]



Immunoprecipitation of ALPPL2 transfected lysate using anti-ALPPL2 monoclonal antibody and Protein A Magnetic Bead ([U0007](#)), and immunoblotted with ALPPL2 MaxPab rabbit polyclonal antibody.



Western blot analysis of ALPPL2 over-expressed 293 cell line, cotransfected with ALPPL2 Validated Chimera RNAi (Cat # AT1125a)

Please note: All products are 'FOR RESEARCH USE ONLY. NOT FOR USE IN DIAGNOSTIC OR THERAPEUTIC PROCEDURES'.