

ALS2CR8 Antibody (monoclonal) (M01)

Mouse monoclonal antibody raised against a partial recombinant ALS2CR8.

Catalog # AT1127a

Product Information

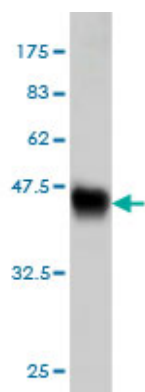
Application	WB, IHC, IF, E
Primary Accession	Q8N187
Other Accession	NM_024744
Reactivity	Human
Host	mouse
Clonality	monoclonal
Isotype	IgG2a Kappa
Clone Names	2A3
Calculated MW	80698

Additional Information

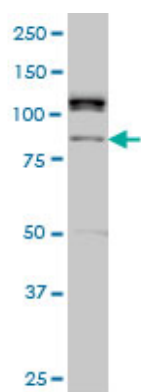
Gene ID	79800
Other Names	Calcium-responsive transcription factor, Amyotrophic lateral sclerosis 2 chromosomal region candidate gene 8 protein, Calcium-response factor, CaRF, Testis development protein NYD-SP24, CARF, ALS2CR8
Target/Specificity	ALS2CR8 (NP_079020, 621 a.a. ~ 718 a.a) partial recombinant protein with GST tag. MW of the GST tag alone is 26 KDa.
Dilution	WB~~1:500~1000 IHC~~1:100~500 IF~~1:50~200 E~~N/A
Format	Clear, colorless solution in phosphate buffered saline, pH 7.2 .
Storage	Store at -20°C or lower. Aliquot to avoid repeated freezing and thawing.
Precautions	ALS2CR8 Antibody (monoclonal) (M01) is for research use only and not for use in diagnostic or therapeutic procedures.

References

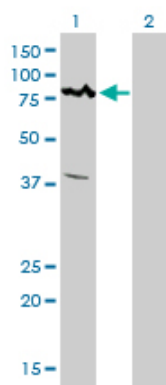
CARF: an emerging regulator of p53 tumor suppressor and senescence pathway. Cheung CT, et al. Mech Ageing Dev, 2009 Jan-Feb. PMID 18555516. Diversification of transcriptional modulation: large-scale identification and characterization of putative alternative promoters of human genes. Kimura K, et al. Genome Res, 2006 Jan. PMID 16344560. Towards a proteome-scale map of the human protein-protein interaction network. Rual JF, et al. Nature, 2005 Oct 20. PMID 16189514. Generation and annotation of the DNA sequences of human chromosomes 2 and 4. Hillier LW, et al. Nature, 2005 Apr 7. PMID 15815621. The status, quality, and expansion of the NIH full-length cDNA project: the Mammalian Gene Collection (MGC). Gerhard DS, et al. Genome Res, 2004 Oct. PMID 15489334.



Antibody Reactive Against Recombinant Protein. Western Blot detection against Immunogen (36.52 KDa) .

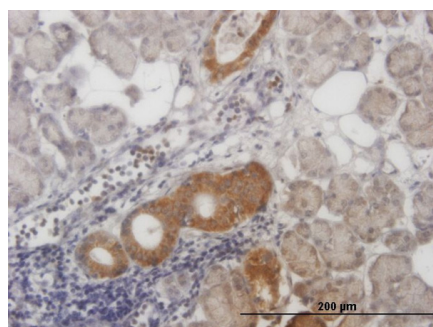


ALS2CR8 monoclonal antibody (M01), clone 2A3 Western Blot analysis of ALS2CR8 expression in HeLa S3 NE ((Cat # AT1127a)



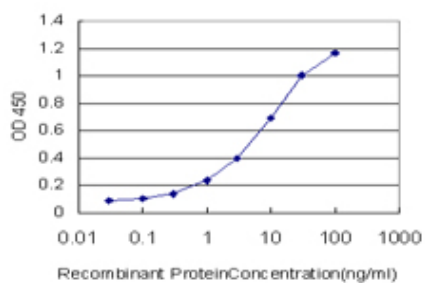
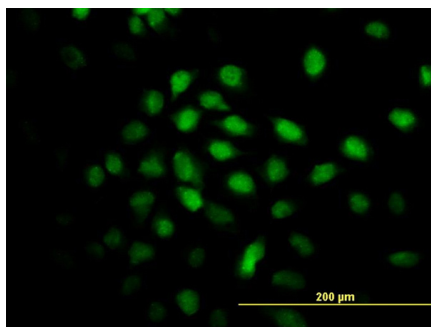
Western Blot analysis of ALS2CR8 expression in transfected 293T cell line by ALS2CR8 monoclonal antibody (M01), clone 2A3.

Lane 1: ALS2CR8 transfected lysate(79.8 KDa).
Lane 2: Non-transfected lysate.

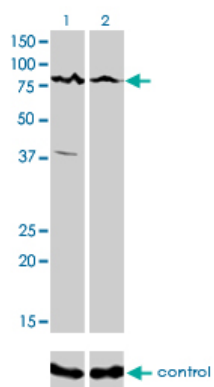


Immunoperoxidase of monoclonal antibody to ALS2CR8 on formalin-fixed paraffin-embedded human salivary gland. [antibody concentration 1 ug/ml]

Immunofluorescence of monoclonal antibody to ALS2CR8 on HeLa cell. [antibody concentration 10 ug/ml]



Detection limit for recombinant GST tagged ALS2CR8 is approximately 0.3ng/ml as a capture antibody.



Western blot analysis of ALS2CR8 over-expressed 293 cell line, cotransfected with ALS2CR8 Validated Chimera RNAi (Cat # AT1127a)

Please note: All products are 'FOR RESEARCH USE ONLY. NOT FOR USE IN DIAGNOSTIC OR THERAPEUTIC PROCEDURES'.