

# AMELX Antibody (monoclonal) (M03)

Mouse monoclonal antibody raised against a partial recombinant AMELX.

Catalog # AT1131a

## Product Information

---

<b>Application</b>	WB, E
<b>Primary Accession</b>	<a href="#">Q99217</a>
<b>Other Accession</b>	<a href="#">NM_001142</a>
<b>Reactivity</b>	Human
<b>Host</b>	mouse
<b>Clonality</b>	monoclonal
<b>Isotype</b>	IgG2b Kappa
<b>Clone Names</b>	3B5
<b>Calculated MW</b>	21603

## Additional Information

---

<b>Gene ID</b>	265
<b>Other Names</b>	Amelogenin, X isoform, AMELX, AMG, AMGX
<b>Target/Specificity</b>	AMELX (NP_001133, 93 a.a. ~ 191 a.a) partial recombinant protein with GST tag. MW of the GST tag alone is 26 KDa.
<b>Dilution</b>	WB~~1:500~1000 E~~N/A
<b>Format</b>	Clear, colorless solution in phosphate buffered saline, pH 7.2 .
<b>Storage</b>	Store at -20°C or lower. Aliquot to avoid repeated freezing and thawing.
<b>Precautions</b>	AMELX Antibody (monoclonal) (M03) is for research use only and not for use in diagnostic or therapeutic procedures.

## Background

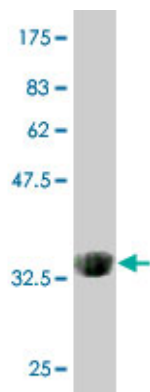
---

This gene encodes a member of the amelogenin family of extracellular matrix proteins. Amelogenins are involved in biomineralization during tooth enamel development. Mutations in this gene cause X-linked amelogenesis imperfecta. Alternative splicing results in multiple transcript variants encoding different isoforms.

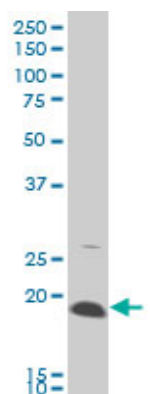
## References

---

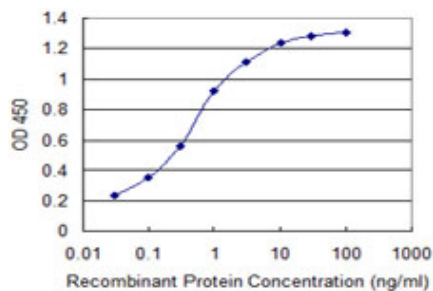
1.Expression of odontogenic ameloblast-associated protein, amelotin, ameloblastin, and amelogenin in odontogenic tumors: immunohistochemical analysis and pathogenetic considerations.Crivellini MM, Felipini RC, Miyahara GI, de Sousa SC.J Oral Pathol Med. 2011 Sep 21. doi: 10.1111/j.1600-0714.2011.01079.x.



Antibody Reactive Against Recombinant Protein.Western Blot detection against Immunogen (36.63 KDa) .



AMELX monoclonal antibody (M03), clone 3B5 Western Blot analysis of AMELX expression in A-431 ( (Cat # AT1131a )



Detection limit for recombinant GST tagged AMELX is 0.03 ng/ml as a capture antibody.

Please note: All products are 'FOR RESEARCH USE ONLY. NOT FOR USE IN DIAGNOSTIC OR THERAPEUTIC PROCEDURES'.