

# AMELX Antibody (monoclonal) (M04)

Mouse monoclonal antibody raised against a partial recombinant AMELX.

Catalog # AT1132a

## Product Information

---

<b>Application</b>	WB, E
<b>Primary Accession</b>	<a href="#">Q99217</a>
<b>Other Accession</b>	<a href="#">NM_001142</a>
<b>Reactivity</b>	Human
<b>Host</b>	mouse
<b>Clonality</b>	monoclonal
<b>Isotype</b>	IgG2b Kappa
<b>Clone Names</b>	6G3
<b>Calculated MW</b>	21603

## Additional Information

---

<b>Gene ID</b>	265
<b>Other Names</b>	Amelogenin, X isoform, AMELX, AMG, AMGX
<b>Target/Specificity</b>	AMELX (NP_001133, 93 a.a. ~ 191 a.a) partial recombinant protein with GST tag. MW of the GST tag alone is 26 KDa.
<b>Dilution</b>	WB~~1:500~1000 E~~N/A
<b>Format</b>	Clear, colorless solution in phosphate buffered saline, pH 7.2 .
<b>Storage</b>	Store at -20°C or lower. Aliquot to avoid repeated freezing and thawing.
<b>Precautions</b>	AMELX Antibody (monoclonal) (M04) is for research use only and not for use in diagnostic or therapeutic procedures.

## Background

---

This gene encodes a member of the amelogenin family of extracellular matrix proteins. Amelogenins are involved in biomineralization during tooth enamel development. Mutations in this gene cause X-linked amelogenesis imperfecta. Alternative splicing results in multiple transcript variants encoding different isoforms.

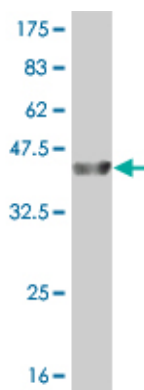
## References

---

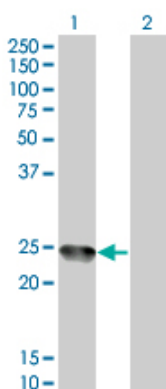
Variation at the NFATC2 Locus Increases the Risk of Thiazolinedione-Induced Edema in the Diabetes REduction Assessment with ramipril and rosiglitazone Medication (DREAM) Study. Bailey SD, et al. Diabetes Care, 2010 Jul 13. PMID 20628086. MMP20 hemopexin domain mutation in amelogenesis imperfecta. Lee SK,

et al. J Dent Res, 2010 Jan. PMID 19966041. Gene-centric association signals for lipids and apolipoproteins identified via the HumanCVD BeadChip. Talmud PJ, et al. Am J Hum Genet, 2009 Nov. PMID 19913121. Typing of 48 autosomal SNPs and amelogenin with GenPlex SNP genotyping system in forensic genetics. Tomas C, et al. Forensic Sci Int Genet, 2008 Dec. PMID 19083859. Changes in the quaternary structure of amelogenin when adsorbed onto surfaces. Tarasevich BJ, et al. Biopolymers, 2009 Feb. PMID 19025992.

## Images

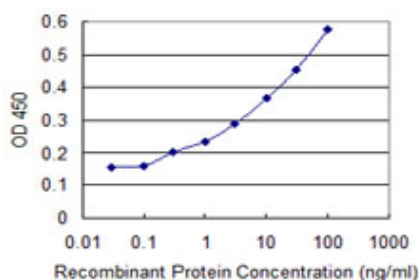


Antibody Reactive Against Recombinant Protein. Western Blot detection against Immunogen (36.63 KDa) .



Western Blot analysis of AMELX expression in transfected 293T cell line by AMELX monoclonal antibody (M04), clone 6G3.

Lane 1: AMELX transfected lysate (21.603 KDa).  
Lane 2: Non-transfected lysate.



Detection limit for recombinant GST tagged AMELX is 0.1 ng/ml as a capture antibody.

Please note: All products are 'FOR RESEARCH USE ONLY. NOT FOR USE IN DIAGNOSTIC OR THERAPEUTIC PROCEDURES'.