

AMPD2 Antibody (monoclonal) (M01)

Mouse monoclonal antibody raised against a partial recombinant AMPD2.

Catalog # AT1133a

Product Information

Application	WB
Primary Accession	Q01433
Other Accession	NM_139156
Reactivity	Human, Mouse, Rat
Host	mouse
Clonality	monoclonal
Isotype	IgG1 Kappa
Clone Names	2F5
Calculated MW	94890

Additional Information

Gene ID	271
Other Names	AMP deaminase 2, AMP deaminase isoform L, AMPD2
Target/Specificity	AMPD2 (NP_631895, 86 a.a. ~ 185 a.a) partial recombinant protein with GST tag. MW of the GST tag alone is 26 KDa.
Dilution	WB~~1:500~1000
Format	Clear, colorless solution in phosphate buffered saline, pH 7.2 .
Storage	Store at -20°C or lower. Aliquot to avoid repeated freezing and thawing.
Precautions	AMPD2 Antibody (monoclonal) (M01) is for research use only and not for use in diagnostic or therapeutic procedures.

Background

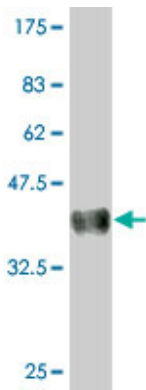
Adenosine monophosphate deaminase-2 (EC 3.5.4.6) catalyzes the deamination of AMP to IMP and plays an important role in the purine nucleotide cycle.

References

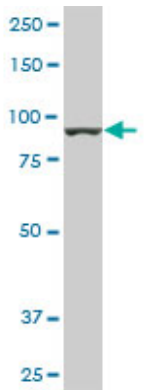
Genome-wide association study of recurrent early-onset major depressive disorder. Shi J, et al. Mol Psychiatry, 2010 Feb 2. PMID 20125088.Integrative predictive model of coronary artery calcification in atherosclerosis. McGeachie M, et al. Circulation, 2009 Dec 15. PMID 19948975.Expression patterns of AMP-deaminase isozymes in human hepatocellular carcinoma (HCC). Szydzowska M, et al. Mol Cell Biochem, 2008 Nov. PMID 18493842.Global, in vivo, and site-specific phosphorylation dynamics in signaling networks.

Olsen JV, et al. Cell, 2006 Nov 3. PMID 17081983.A probability-based approach for high-throughput protein phosphorylation analysis and site localization. Beausoleil SA, et al. Nat Biotechnol, 2006 Oct. PMID 16964243.

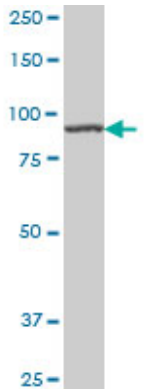
Images



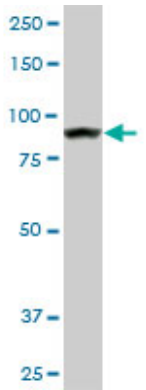
Antibody Reactive Against Recombinant Protein.Western Blot detection against Immunogen (36.74 KDa) .



AMPD2 monoclonal antibody (M01), clone 2F5. Western Blot analysis of AMPD2 expression in PC-12 ((Cat # AT1133a)

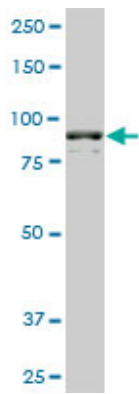


AMPD2 monoclonal antibody (M01), clone 2F5 Western Blot analysis of AMPD2 expression in Hela S3 NE ((Cat # AT1133a)

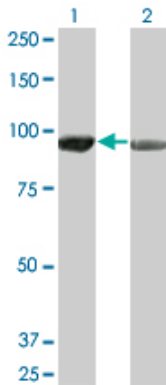


AMPD2 monoclonal antibody (M01), clone 2F5. Western Blot analysis of AMPD2 expression in Raw 264.7 ((Cat # AT1133a)

AMPD2 monoclonal antibody (M01), clone 2F5. Western



Blot analysis of AMPD2 expression in NIH/3T3 (Cat # AT1133a)



Western Blot analysis of AMPD2 expression in transfected 293T cell line by AMPD2 monoclonal antibody (M01), clone 2F5.

Lane 1: AMPD2 transfected lysate(92.1 KDa).

Lane 2: Non-transfected lysate.

Please note: All products are 'FOR RESEARCH USE ONLY. NOT FOR USE IN DIAGNOSTIC OR THERAPEUTIC PROCEDURES'.