

# ANKRD15 Antibody (monoclonal) (M01)

Mouse monoclonal antibody raised against a partial recombinant ANKRD15.

Catalog # AT1142a

## Product Information

---

Application	WB, E
Primary Accession	<a href="#">Q14678</a>
Other Accession	<a href="#">BC038116</a>
Reactivity	Human
Host	mouse
Clonality	monoclonal
Isotype	IgG2a Kappa
Clone Names	2B8
Calculated MW	147289

## Additional Information

---

Gene ID	23189
Other Names	KN motif and ankyrin repeat domain-containing protein 1, Ankyrin repeat domain-containing protein 15, Kidney ankyrin repeat-containing protein, KANK1, ANKRD15, KANK, KIAA0172
Target/Specificity	ANKRD15 (AAH38116, 701 a.a. ~ 800 a.a) partial recombinant protein with GST tag. MW of the GST tag alone is 26 KDa.
Dilution	WB~~1:500~1000 E~~N/A
Format	Clear, colorless solution in phosphate buffered saline, pH 7.2 .
Storage	Store at -20°C or lower. Aliquot to avoid repeated freezing and thawing.
Precautions	ANKRD15 Antibody (monoclonal) (M01) is for research use only and not for use in diagnostic or therapeutic procedures.

## Background

---

This gene encodes a protein containing four ankyrin repeat domains in its C-terminus. The suggested role for this protein is in tumorigenesis of renal cell carcinoma. Two alternatively spliced transcript variants encoding different isoforms have been identified.

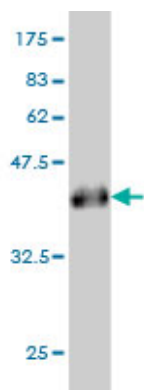
## References

---

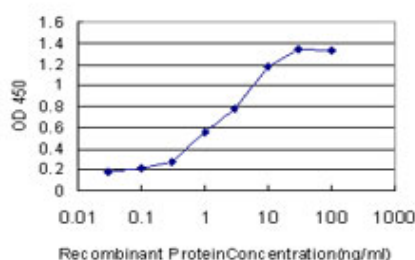
Personalized smoking cessation: interactions between nicotine dose, dependence and quit-success genotype score. Rose JE, et al. Mol Med, 2010 Jul-Aug. PMID 20379614.KANK1, a candidate tumor suppressor gene, is

fused to PDGFRB in an imatinib-responsive myeloid neoplasm with severe thrombocythemia. Medves S, et al. Leukemia, 2010 May. PMID 20164854. Replication of CD58 and CLEC16A as genome-wide significant risk genes for multiple sclerosis. Hoppenbrouwers IA, et al. J Hum Genet, 2009 Nov. PMID 19834503. A major mutation of KIF21A associated with congenital fibrosis of the extraocular muscles type 1 (CFEOM1) enhances translocation of Kank1 to the membrane. Kakinuma N, et al. Biochem Biophys Res Commun, 2009 Sep 4. PMID 19559006. Risk alleles for multiple sclerosis in multiplex families. D'Netto MJ, et al. Neurology, 2009 Jun 9. PMID 19506219.

## Images



Antibody Reactive Against Recombinant Protein. Western Blot detection against Immunogen (36.63 KDa) .



Detection limit for recombinant GST tagged ANKRD15 is approximately 0.1 ng/ml as a capture antibody.

Please note: All products are 'FOR RESEARCH USE ONLY. NOT FOR USE IN DIAGNOSTIC OR THERAPEUTIC PROCEDURES'.