

ANP32A Antibody (monoclonal) (M01)

Mouse monoclonal antibody raised against a full length recombinant ANP32A.

Catalog # AT1145a

Product Information

Application	WB, IHC, IF
Primary Accession	P39687
Other Accession	BC007200
Reactivity	Human
Host	mouse
Clonality	monoclonal
Isotype	IgG1 Kappa
Clone Names	2G11-4A5
Calculated MW	28585

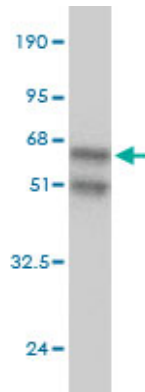
Additional Information

Gene ID	8125
Other Names	Acidic leucine-rich nuclear phosphoprotein 32 family member A, Acidic nuclear phosphoprotein pp32, pp32, Leucine-rich acidic nuclear protein, LANP, Mapmodulin, Potent heat-stable protein phosphatase 2A inhibitor I1PP2A, Putative HLA-DR-associated protein I, PHAPI, ANP32A, C15orf1, LANP, MAPM, PHAP1
Target/Specificity	ANP32A (AAH07200, 1 a.a. ~ 249 a.a) full-length recombinant protein with GST tag. MW of the GST tag alone is 26 KDa.
Dilution	WB~~1:500~1000 IHC~~1:100~500 IF~~1:50~200
Format	Clear, colorless solution in phosphate buffered saline, pH 7.2 .
Storage	Store at -20°C or lower. Aliquot to avoid repeated freezing and thawing.
Precautions	ANP32A Antibody (monoclonal) (M01) is for research use only and not for use in diagnostic or therapeutic procedures.

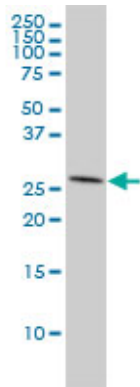
References

1.Foamy viral nuclear RNA-export is distinct from other retroviruses.Bodem J, Schied T, Gabriel R, Rammling M, Rethwilm A.J Virol. 2010 Dec 15. [Epub ahead of print]2.Quantitative nano-proteomics for protein complexes (QNanoPX) related to estrogen transcriptional action.Cheng PC, Chang HK, Chen SH.Mol Cell Proteomics. 2009 Oct 5. [Epub ahead of print]

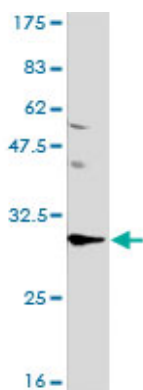
Images



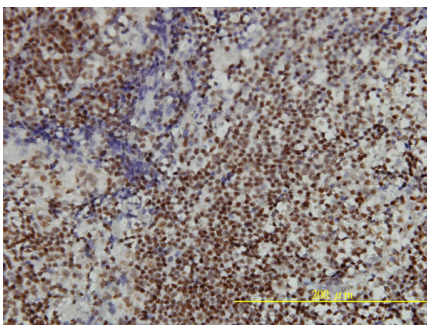
Antibody Reactive Against Recombinant Protein. Western Blot detection against Immunogen (53.13 KDa) .



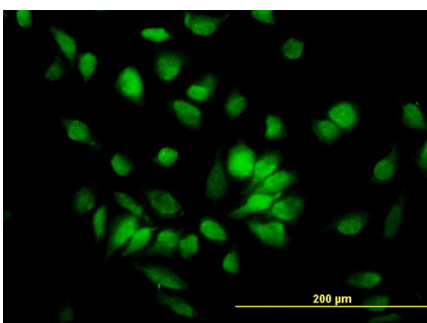
ANP32A monoclonal antibody (M01), clone 2G11-4A5
Western Blot analysis of ANP32A expression in HeLa ((Cat # AT1145a)



ANP32A monoclonal antibody (M01), clone 2G11-4A5.
Western Blot analysis of ANP32A expression in Daudi ((Cat # AT1145a)



Immunoperoxidase of monoclonal antibody to ANP32A on formalin-fixed paraffin-embedded human tonsil tissue. [antibody concentration 3 ug/ml]



Immunofluorescence of monoclonal antibody to ANP32A on HeLa cell. [antibody concentration 10 ug/ml]

Please note: All products are 'FOR RESEARCH USE ONLY. NOT FOR USE IN DIAGNOSTIC OR THERAPEUTIC PROCEDURES'.