

AP2S1 Antibody (monoclonal) (M01)

Mouse monoclonal antibody raised against a full length recombinant AP2S1.

Catalog # AT1153a

Product Information

Application	WB, E
Primary Accession	P53680
Other Accession	BC006337
Reactivity	Human
Host	Mouse
Clonality	monoclonal
Isotype	IgG2a Kappa
Clone Names	3E5
Calculated MW	17018

Additional Information

Gene ID	1175
Other Names	AP-2 complex subunit sigma, Adaptor protein complex AP-2 subunit sigma, Adaptor-related protein complex 2 subunit sigma, Clathrin assembly protein 2 sigma small chain, Clathrin coat assembly protein AP17, Clathrin coat-associated protein AP17, HA2 17 kDa subunit, Plasma membrane adaptor AP-2 17 kDa protein, Sigma2-adaptin, AP2S1, AP17, CLAPS2
Target/Specificity	AP2S1 (AAH06337, 1 a.a. ~ 142 a.a) full-length recombinant protein with GST tag. MW of the GST tag alone is 26 KDa.
Dilution	WB~~1:500~1000 E~~N/A
Format	Clear, colorless solution in phosphate buffered saline, pH 7.2 .
Storage	Store at -20°C or lower. Aliquot to avoid repeated freezing and thawing.
Precautions	AP2S1 Antibody (monoclonal) (M01) is for research use only and not for use in diagnostic or therapeutic procedures.

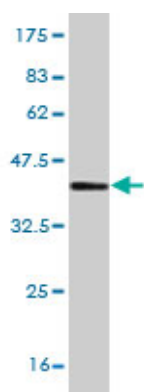
Background

One of two major clathrin-associated adaptor complexes, AP-2, is a heterotetramer which is associated with the plasma membrane. This complex is composed of two large chains, a medium chain, and a small chain. This gene encodes the small chain of this complex. Alternative splicing has been observed in this gene and results in two known transcripts.

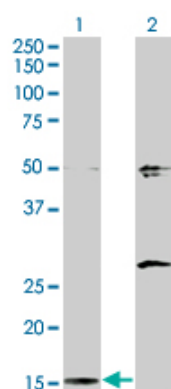
References

Large-scale mapping of human protein-protein interactions by mass spectrometry. Ewing RM, et al. Mol Syst Biol, 2007. PMID 17353931. A conserved dileucine motif mediates clathrin and AP-2-dependent endocytosis of the HIV-1 envelope protein. Byland R, et al. Mol Biol Cell, 2007 Feb. PMID 17108326. Interaction of HIV-1 Gag with the clathrin-associated adaptor AP-2. Batnick M, et al. Virology, 2005 Nov 25. PMID 16139856. Human immunodeficiency virus Nef induces rapid internalization of the T-cell coreceptor CD8alpha. Stove V, et al. J Virol, 2005 Sep. PMID 16103193. PICK1 interacts with ABP/GRIP to regulate AMPA receptor trafficking. Lu W, et al. Neuron, 2005 Aug 4. PMID 16055064.

Images

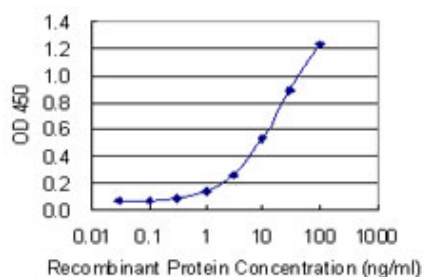


Antibody Reactive Against Recombinant Protein. Western Blot detection against Immunogen (41.36 kDa) .

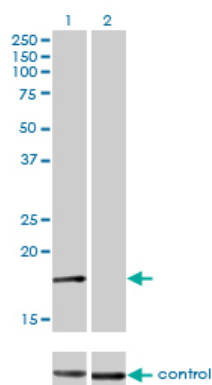


Western Blot analysis of AP2S1 expression in transfected 293T cell line by AP2S1 monoclonal antibody (M01), clone 3E4.

Lane 1: AP2S1 transfected lysate (17 kDa).
Lane 2: Non-transfected lysate.



Detection limit for recombinant GST tagged AP2S1 is 0.3 ng/ml as a capture antibody.



Western blot analysis of AP2S1 over-expressed 293 cell line, cotransfected with AP2S1 Validated Chimera RNAi (Cat # AT1153a)

Please note: All products are 'FOR RESEARCH USE ONLY. NOT FOR USE IN DIAGNOSTIC OR THERAPEUTIC PROCEDURES'.