

# AP4B1 Antibody (monoclonal) (M01)

Mouse monoclonal antibody raised against a partial recombinant AP4B1.

Catalog # AT1155a

## Product Information

---

<b>Application</b>	WB, E
<b>Primary Accession</b>	<a href="#">Q9Y6B7</a>
<b>Other Accession</b>	<a href="#">NM_006594</a>
<b>Reactivity</b>	Human
<b>Host</b>	mouse
<b>Clonality</b>	monoclonal
<b>Isotype</b>	IgG1 Kappa
<b>Clone Names</b>	1B7
<b>Calculated MW</b>	83260

## Additional Information

---

<b>Gene ID</b>	10717
<b>Other Names</b>	AP-4 complex subunit beta-1, AP-4 adaptor complex subunit beta, Adaptor-related protein complex 4 subunit beta-1, Beta subunit of AP-4, Beta4-adaptin, AP4B1
<b>Target/Specificity</b>	AP4B1 (NP_006585, 640 a.a. ~ 739 a.a) partial recombinant protein with GST tag. MW of the GST tag alone is 26 KDa.
<b>Dilution</b>	WB~~1:500~1000 E~~N/A
<b>Format</b>	Clear, colorless solution in phosphate buffered saline, pH 7.2 .
<b>Storage</b>	Store at -20°C or lower. Aliquot to avoid repeated freezing and thawing.
<b>Precautions</b>	AP4B1 Antibody (monoclonal) (M01) is for research use only and not for use in diagnostic or therapeutic procedures.

## Background

---

The heterotetrameric adaptor protein (AP) complexes sort integral membrane proteins at various stages of the endocytic and secretory pathways. AP4 is composed of 2 large chains, beta-4 (AP4B1) and epsilon-4 (AP4E1; MIM 607244), a medium chain, mu-4 (AP4M1; MIM 602296), and a small chain, sigma-4 (AP4S1; MIM 607243).

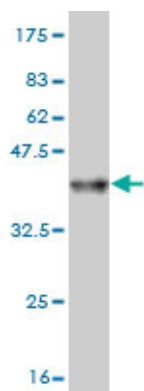
## References

---

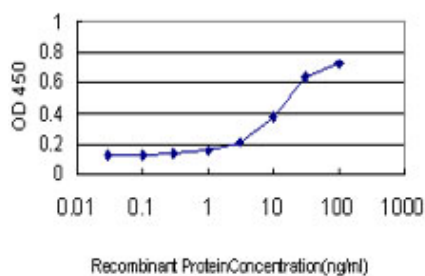
Large-scale mapping of human protein-protein interactions by mass spectrometry. Ewing RM, et al. Mol Syst

Biol, 2007. PMID 17353931. The DNA sequence and biological annotation of human chromosome 1. Gregory SG, et al. Nature, 2006 May 18. PMID 16710414. The status, quality, and expansion of the NIH full-length cDNA project: the Mammalian Gene Collection (MGC). Gerhard DS, et al. Genome Res, 2004 Oct. PMID 15489334. Complete sequencing and characterization of 21,243 full-length human cDNAs. Ota T, et al. Nat Genet, 2004 Jan. PMID 14702039. Generation and initial analysis of more than 15,000 full-length human and mouse cDNA sequences. Strausberg RL, et al. Proc Natl Acad Sci U S A, 2002 Dec 24. PMID 12477932.

## Images



Antibody Reactive Against Recombinant Protein. Western Blot detection against Immunogen (36.74 kDa).



Detection limit for recombinant GST tagged AP4B1 is approximately 0.3 ng/ml as a capture antibody.

Please note: All products are 'FOR RESEARCH USE ONLY. NOT FOR USE IN DIAGNOSTIC OR THERAPEUTIC PROCEDURES'.