

APEG1 Antibody (monoclonal) (M01)

Mouse monoclonal antibody raised against a full length recombinant APEG1.

Catalog # AT1159a

Product Information

Application	WB, E
Primary Accession	Q15772
Other Accession	BC006346
Reactivity	Human
Host	mouse
Clonality	monoclonal
Isotype	IgG1 Kappa
Clone Names	2C2-2C7
Calculated MW	354289

Additional Information

Gene ID	10290
Other Names	Striated muscle preferentially expressed protein kinase, Aortic preferentially expressed protein 1, APEG-1, SPEG, APEG1, KIAA1297
Target/Specificity	APEG1 (AAH06346, 1 a.a. ~ 113 a.a) full-length recombinant protein with GST tag. MW of the GST tag alone is 26 KDa.
Dilution	WB~~1:500~1000 E~~N/A
Format	Clear, colorless solution in phosphate buffered saline, pH 7.2 .
Storage	Store at -20°C or lower. Aliquot to avoid repeated freezing and thawing.
Precautions	APEG1 Antibody (monoclonal) (M01) is for research use only and not for use in diagnostic or therapeutic procedures.

Background

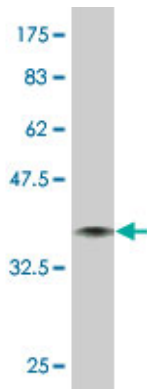
This gene encodes a protein with similarity to members of the myosin light chain kinase family. This protein family is required for myocyte cytoskeletal development. Studies in mouse have determined that a lack of this protein affected myocardial development. Multiple alternatively spliced transcript variants have been reported for this gene, but the full-length nature of only two variants that encode different protein isoforms has been defined.

References

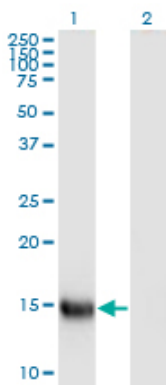
Variation at the NFATC2 Locus Increases the Risk of Thiazolinedinedione-Induced Edema in the Diabetes

REduction Assessment with ramipril and rosiglitazone Medication (DREAM) Study. Bailey SD, et al. Diabetes Care, 2010 Jul 13. PMID 20628086. Gene-centric association signals for lipids and apolipoproteins identified via the HumanCVD BeadChip. Talmud PJ, et al. Am J Hum Genet, 2009 Nov. PMID 19913121. The human desmin locus: gene organization and LCR-mediated transcriptional control. Tam JL, et al. Genomics, 2006 Jun. PMID 16545539. X-ray structure of engineered human Aortic Preferentially Expressed Protein-1 (APEG-1). Manjasetty BA, et al. BMC Struct Biol, 2005 Dec 14. PMID 16354304. Diversification of transcriptional modulation: large-scale identification and characterization of putative alternative promoters of human genes. Kimura K, et al. Genome Res, 2006 Jan. PMID 16344560.

Images

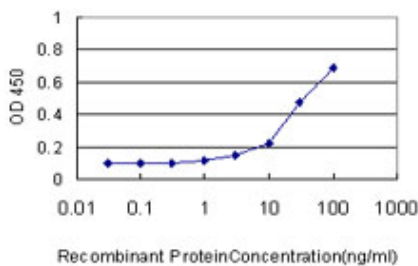


Antibody Reactive Against Recombinant Protein. Western Blot detection against Immunogen (38.17 KDa) .



Western Blot analysis of SPEG expression in transfected 293T cell line by APEG1 monoclonal antibody (M01), clone S2.

Lane 1: SPEG transfected lysate (Predicted MW: 12.7 KDa).
Lane 2: Non-transfected lysate.



Detection limit for recombinant GST tagged APEG1 is approximately 3ng/ml as a capture antibody.

Please note: All products are 'FOR RESEARCH USE ONLY. NOT FOR USE IN DIAGNOSTIC OR THERAPEUTIC PROCEDURES'.