

API5 Antibody (monoclonal) (M01)

Mouse monoclonal antibody raised against a partial recombinant API5.

Catalog # AT1161a

Product Information

Application	WB, IHC, IF, E
Primary Accession	Q9BZZ5
Other Accession	BC017709
Reactivity	Human
Host	mouse
Clonality	monoclonal
Isotype	IgG2b Kappa
Clone Names	1C2
Calculated MW	59005

Additional Information

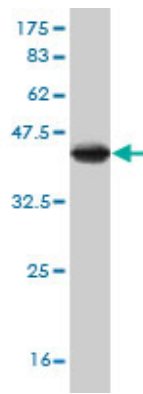
Gene ID	8539
Other Names	Apoptosis inhibitor 5, API-5, Antiapoptosis clone 11 protein, AAC-11, Cell migration-inducing gene 8 protein, Fibroblast growth factor 2-interacting factor, FIF, Protein XAGL, API5
Target/Specificity	API5 (AAH17709, 400 a.a. ~ 504 a.a) partial recombinant protein with GST tag. MW of the GST tag alone is 26 KDa.
Dilution	WB~~1:500~1000 IHC~~1:100~500 IF~~1:50~200 E~~N/A
Format	Clear, colorless solution in phosphate buffered saline, pH 7.2 .
Storage	Store at -20°C or lower. Aliquot to avoid repeated freezing and thawing.
Precautions	API5 Antibody (monoclonal) (M01) is for research use only and not for use in diagnostic or therapeutic procedures.

References

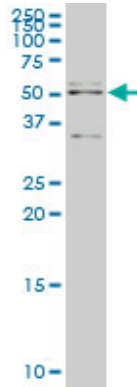
1.Api5 Contributes to E2F1 Control of the G1/S Cell Cycle Phase Transition.Garcia-Jove Navarro M, Basset C, Arcondeguy T, Touriol C, Perez G, Prats H, Lacazette EPLoS One. 2013 Aug 7;8(8):e71443. doi: 10.1371/journal.pone.0071443. Print 2013.

Images

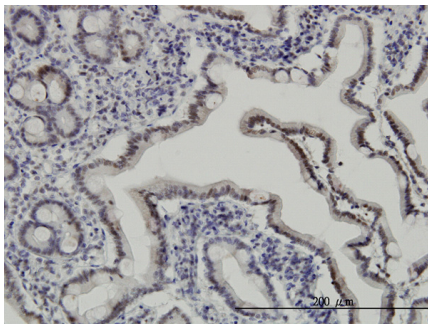
Antibody Reactive Against Recombinant Protein.Western



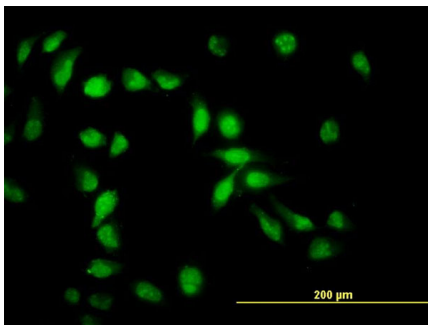
Blot detection against Immunogen (37.18 KDa) .



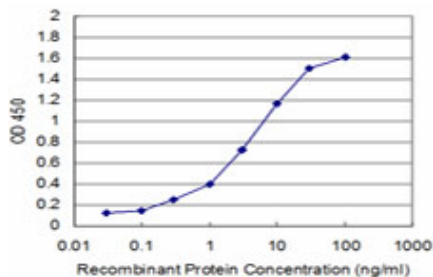
API5 monoclonal antibody (M01), clone 1C2 Western Blot analysis of API5 expression in Hela S3 NE ((Cat # AT1161a)



Immunoperoxidase of monoclonal antibody to API5 on formalin-fixed paraffin-embedded human small Intestine. [antibody concentration 3 ug/ml]



Immunofluorescence of monoclonal antibody to API5 on HeLa cell. [antibody concentration 10 ug/ml]



Detection limit for recombinant GST tagged API5 is approximately 0.1ng/ml as a capture antibody.

Please note: All products are 'FOR RESEARCH USE ONLY. NOT FOR USE IN DIAGNOSTIC OR THERAPEUTIC PROCEDURES'.