

APLN Antibody (monoclonal) (M01)

Mouse monoclonal antibody raised against a full length recombinant APLN.

Catalog # AT1162a

Product Information

Application	WB, E
Primary Accession	Q9ULZ1
Other Accession	BC021104.1
Reactivity	Human
Host	mouse
Clonality	monoclonal
Isotype	IgG1 Kappa
Clone Names	2A1-2D5
Calculated MW	8569

Additional Information

Gene ID	8862
Other Names	Apelin, APJ endogenous ligand, Apelin-36, Apelin-31, Apelin-28, Apelin-13, APLN, APEL
Target/Specificity	APLN (AAH21104.1, 1 a.a. ~ 122 a.a) full-length recombinant protein with GST tag. MW of the GST tag alone is 26 KDa.
Dilution	WB~~1:500~1000 E~~N/A
Format	Clear, colorless solution in phosphate buffered saline, pH 7.2 .
Storage	Store at -20°C or lower. Aliquot to avoid repeated freezing and thawing.
Precautions	APLN Antibody (monoclonal) (M01) is for research use only and not for use in diagnostic or therapeutic procedures.

Background

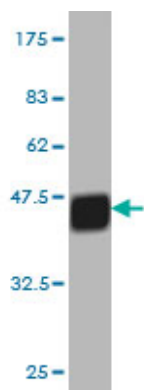
This gene encodes a peptide that functions as an endogenous ligand for the G protein coupled receptor APJ. The encoded protein is synthesized as a prepropeptide that is processed into biologically active C-terminal fragments. The peptide fragments activate different tissue specific signaling pathways that regulate diverse biological functions including fluid homeostasis, cardiovascular function and insulin secretion. This protein also functions as a coreceptor for the human immunodeficiency virus 1.

References

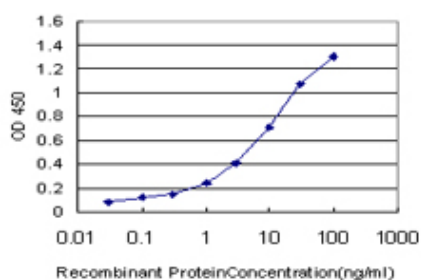
Elevated plasma levels of apelin in children with type 1 diabetes mellitus. Meral C, et al. J Pediatr Endocrinol

Metab, 2010 May. PMID 20662349.Variation at the NFATC2 Locus Increases the Risk of Thiazolinedinedione-Induced Edema in the Diabetes REduction Assessment with ramipril and rosiglitazone Medication (DREAM) Study. Bailey SD, et al. Diabetes Care, 2010 Jul 13. PMID 20628086.Plasma apelin and ADMA Levels in patients with essential hypertension. Sonmez A, et al. Clin Exp Hypertens, 2010 May. PMID 20504125.Validation of genetic association in apelin-AGTRL1 system with hypertension in a larger Han Chinese population. Niu W, et al. J Hypertens, 2010 Sep. PMID 20485192.Assessment of serum apelin levels in girls with anorexia nervosa. Ziora K, et al. J Clin Endocrinol Metab, 2010 Jun. PMID 20382684.

Images



Antibody Reactive Against Recombinant Protein.Western Blot detection against Immunogen (39.16 KDa) .



Detection limit for recombinant GST tagged APLN is approximately 0.1ng/ml as a capture antibody.

Please note: All products are 'FOR RESEARCH USE ONLY. NOT FOR USE IN DIAGNOSTIC OR THERAPEUTIC PROCEDURES'.