

APOC1 Antibody (monoclonal) (M01)

Mouse monoclonal antibody raised against a full length recombinant APOC1.

Catalog # AT1167a

Product Information

Application	WB
Primary Accession	P02654
Other Accession	BC009698
Reactivity	Human
Host	mouse
Clonality	monoclonal
Isotype	IgG1 kappa
Clone Names	2E2-1A3
Calculated MW	9332

Additional Information

Gene ID	341
Other Names	Apolipoprotein C-I, Apo-CI, ApoC-I, Apolipoprotein C1, Truncated apolipoprotein C-I, APOC1
Target/Specificity	APOC1 (AAH09698, 1 a.a. ~ 83 a.a) full-length recombinant protein with GST tag. MW of the GST tag alone is 26 KDa.
Dilution	WB~~1:500~1000
Format	Clear, colorless solution in phosphate buffered saline, pH 7.2 .
Storage	Store at -20°C or lower. Aliquot to avoid repeated freezing and thawing.
Precautions	APOC1 Antibody (monoclonal) (M01) is for research use only and not for use in diagnostic or therapeutic procedures.

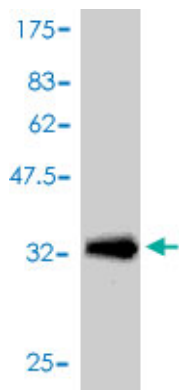
Background

The protein encoded by this gene is a member of the apolipoprotein C1 family. This gene is expressed primarily in the liver, and it is activated when monocytes differentiate into macrophages. A pseudogene of this gene is located 4 kb downstream in the same orientation, on the same chromosome. This gene is mapped to chromosome 19, where it resides within a apolipoprotein gene cluster. Alternatively spliced transcript variants have been found for this gene, but the biological validity of some variants has not been determined.

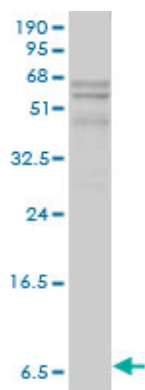
References

1. Proteins related to lipoprotein profile were identified using a pharmaco-proteomic approach as markers for growth response to growth hormone (GH) treatment in short prepubertal children. Andersson B, Hellgren G, Nierop AF, Hochberg Z, Albertsson-Wikland K. *Proteome Sci.* 2009 Nov 2;7:40. 2. Apolipoprotein C1 association with Hepatitis C Virus. Meunier JC, Russell RS, Engle RH, Faulk KN, Purcell RH, Emerson SU. *J Virol.* 2008 Oct;82(19):9647-56. Epub 2008 Jul 30.

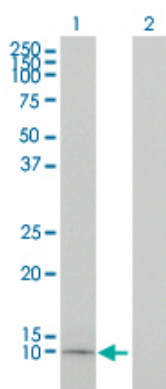
Images



Antibody Reactive Against Recombinant Protein. Western Blot detection against Immunogen (34.87 kDa) .



APOC1 monoclonal antibody (M01), clone 2E2-1A3. Western Blot analysis of APOC1 expression in human liver.



Western Blot analysis of APOC1 expression in transfected 293T cell line by APOC1 monoclonal antibody (M01), clone 2E2-1A3.

Lane 1: APOC1 transfected lysate (9 kDa).
Lane 2: Non-transfected lysate.

Please note: All products are 'FOR RESEARCH USE ONLY. NOT FOR USE IN DIAGNOSTIC OR THERAPEUTIC PROCEDURES'.