

APOM Antibody (monoclonal) (M02)

Mouse monoclonal antibody raised against a full length recombinant APOM.

Catalog # AT1172a

Product Information

Application	WB, E
Primary Accession	O95445
Other Accession	BC020683
Reactivity	Human
Host	mouse
Clonality	monoclonal
Isotype	IgG2b Kappa
Clone Names	2E6
Calculated MW	21253

Additional Information

Gene ID	55937
Other Names	Apolipoprotein M, Apo-M, ApoM, Protein G3a, APOM, G3A, NG20
Target/Specificity	APOM (AAH20683, 23 a.a. ~ 188 a.a) full-length recombinant protein with GST tag. MW of the GST tag alone is 26 KDa.
Dilution	WB~~1:500~1000 E~~N/A
Format	Clear, colorless solution in phosphate buffered saline, pH 7.2 .
Storage	Store at -20°C or lower. Aliquot to avoid repeated freezing and thawing.
Precautions	APOM Antibody (monoclonal) (M02) is for research use only and not for use in diagnostic or therapeutic procedures.

Background

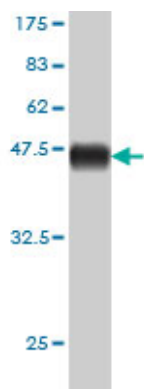
The protein encoded by this gene is an apolipoprotein and member of the lipocalin protein family. It is found associated with high density lipoproteins and to a lesser extent with low density lipoproteins and triglyceride-rich lipoproteins. The encoded protein is secreted through the plasma membrane but remains membrane-bound, where it is involved in lipid transport. Two transcript variants encoding two different isoforms have been found for this gene, but only one of them has been fully characterized.

References

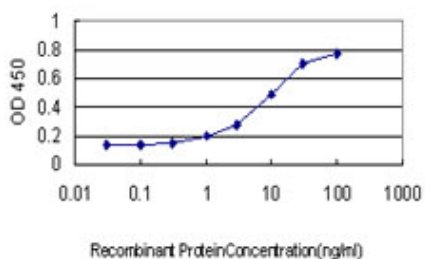
1. Apolipoprotein M Gene (APOM) Polymorphism Modifies Metabolic and Disease Traits in Type 2 Diabetes. Zhou JW, Tsui SK, Ng MC, Geng H, Li SK, So WY, Ma RC, Wang Y, Tao Q, Chen ZY, Chan JC, Ho YY. PLoS

One. 2011 Feb 24;6(2):e17324.2.Evaluation of apolipoprotein M as a biomarker of coronary artery disease.Jiao G, Yang C, Li J, Xiao M, Lin L, Xue Y, Ye Y.Clin Biochem. 2009 Mar;42(4-5):365-70. Epub 2008 Dec 3.

Images



Antibody Reactive Against Recombinant Protein. Western Blot detection against Immunogen (44 KDa) .



Detection limit for recombinant GST tagged APOM is approximately 0.3ng/ml as a capture antibody.

Please note: All products are 'FOR RESEARCH USE ONLY. NOT FOR USE IN DIAGNOSTIC OR THERAPEUTIC PROCEDURES'.