

## ARHGDIA Antibody (monoclonal) (M02)

Mouse monoclonal antibody raised against a full length recombinant ARHGDIA.

Catalog # AT1182a

### Product Information

---

<b>Application</b>	WB, E
<b>Primary Accession</b>	<a href="#">P52565</a>
<b>Other Accession</b>	<a href="#">BC016031</a>
<b>Reactivity</b>	Human
<b>Host</b>	mouse
<b>Clonality</b>	monoclonal
<b>Isotype</b>	IgG1 Kappa
<b>Clone Names</b>	1G5-2F3
<b>Calculated MW</b>	23207

### Additional Information

---

<b>Gene ID</b>	396
<b>Other Names</b>	Rho GDP-dissociation inhibitor 1, Rho GDI 1, Rho-GDI alpha, ARHGDIA, GDIA1
<b>Target/Specificity</b>	ARHGDIA (AAH16031, 1 a.a. ~ 204 a.a) full-length recombinant protein with GST tag. MW of the GST tag alone is 26 KDa.
<b>Dilution</b>	WB~~1:500~1000 E~~N/A
<b>Format</b>	Clear, colorless solution in phosphate buffered saline, pH 7.2 .
<b>Storage</b>	Store at -20°C or lower. Aliquot to avoid repeated freezing and thawing.
<b>Precautions</b>	ARHGDIA Antibody (monoclonal) (M02) is for research use only and not for use in diagnostic or therapeutic procedures.

### Background

---

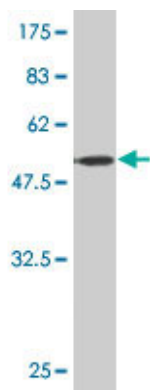
Aplysia Ras-related homologs (ARHs), also called Rho genes, belong to the RAS gene superfamily encoding small guanine nucleotide exchange (GTP/GDP) factors. The ARH proteins may be kept in the inactive, GDP-bound state by interaction with GDP dissociation inhibitors, such as ARHGDIA (Leffers et al., 1993 [PubMed 8262133]).

### References

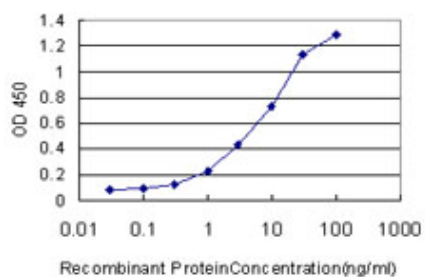
---

1.Comparative proteomic analysis on human L-02 liver cells treated with varying concentrations of trichloroethyleneLiu J, Huang H, Xing X, Xi R, Zhuang Z, Yuan J, Yang F, Zhao J.Toxicol Ind Health. 2007 Mar;23(2):91-101.

## Images



Antibody Reactive Against Recombinant Protein. Western Blot detection against Immunogen (48.18 KDa) .



Detection limit for recombinant GST tagged ARHGDIA is approximately 0.3ng/ml as a capture antibody.

Please note: All products are 'FOR RESEARCH USE ONLY. NOT FOR USE IN DIAGNOSTIC OR THERAPEUTIC PROCEDURES'.