

# ARHGEF1 Antibody (monoclonal) (M02)

Mouse monoclonal antibody raised against a partial recombinant ARHGEF1.

Catalog # AT1184a

## Product Information

---

<b>Application</b>	WB, E
<b>Primary Accession</b>	<a href="#">Q92888</a>
<b>Other Accession</b>	<a href="#">BC034013</a>
<b>Reactivity</b>	Human
<b>Host</b>	mouse
<b>Clonality</b>	monoclonal
<b>Isotype</b>	IgG2a Kappa
<b>Clone Names</b>	2D2
<b>Calculated MW</b>	102435

## Additional Information

---

<b>Gene ID</b>	9138
<b>Other Names</b>	Rho guanine nucleotide exchange factor 1, 115 kDa guanine nucleotide exchange factor, p115-RhoGEF, p115RhoGEF, Sub15, ARHGEF1
<b>Target/Specificity</b>	ARHGEF1 (AAH34013.2, 830 a.a. ~ 927 a.a) partial recombinant protein with GST tag. MW of the GST tag alone is 26 KDa.
<b>Dilution</b>	WB~~1:500~1000 E~~N/A
<b>Format</b>	Clear, colorless solution in phosphate buffered saline, pH 7.2 .
<b>Storage</b>	Store at -20°C or lower. Aliquot to avoid repeated freezing and thawing.
<b>Precautions</b>	ARHGEF1 Antibody (monoclonal) (M02) is for research use only and not for use in diagnostic or therapeutic procedures.

## Background

---

Rho GTPases play a fundamental role in numerous cellular processes that are initiated by extracellular stimuli that work through G protein coupled receptors. The encoded protein may form complex with G proteins and stimulate Rho-dependent signals. Multiple alternatively spliced transcript variants have been found for this gene, but the full-length nature of some variants has not been defined.

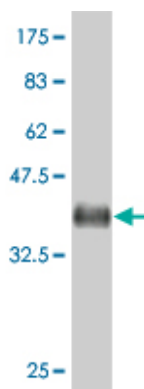
## References

---

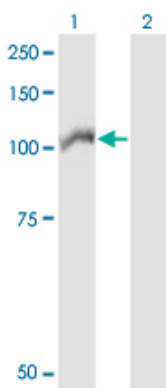
Variation at the NFATC2 Locus Increases the Risk of Thiazolinedione-Induced Edema in the Diabetes REduction Assessment with ramipril and rosiglitazone Medication (DREAM) Study. Bailey SD, et al. Diabetes

Care, 2010 Jul 13. PMID 20628086. Gene-centric association signals for lipids and apolipoproteins identified via the HumanCVD BeadChip. Talmud PJ, et al. Am J Hum Genet, 2009 Nov. PMID 19913121. Mutation of ARHGAP9 in patients with coronary spastic angina. Takefuji M, et al. J Hum Genet, 2010 Jan. PMID 19911011. p115 RhoGEF and microtubules decide the direction apoptotic cells extrude from an epithelium. Slattum G, et al. J Cell Biol, 2009 Sep 7. PMID 19720875. Reversible translocation of p115-RhoGEF by G(12/13)-coupled receptors. Meyer BH, et al. J Cell Biochem, 2008 Aug 1. PMID 18320579.

## Images



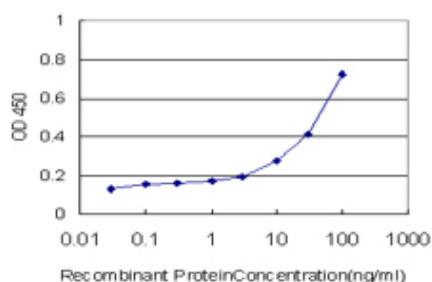
Antibody Reactive Against Recombinant Protein. Western Blot detection against Immunogen (36.41 kDa).



Western Blot analysis of ARHGEF1 expression in transfected 293T cell line by ARHGEF1 monoclonal antibody (M02), clone 2D2.

Lane 1: ARHGEF1 transfected lysate (Predicted MW: 102.4 kDa).

Lane 2: Non-transfected lysate.



Detection limit for recombinant GST tagged ARHGEF1 is approximately 1 ng/ml as a capture antibody.

Please note: All products are 'FOR RESEARCH USE ONLY. NOT FOR USE IN DIAGNOSTIC OR THERAPEUTIC PROCEDURES'.