

ARHGEF1 Antibody (monoclonal) (M03)

Mouse monoclonal antibody raised against a partial recombinant ARHGEF1.

Catalog # AT1185a

Product Information

Application	WB, IF, E
Primary Accession	Q92888
Other Accession	BC034013
Reactivity	Human
Host	Mouse
Clonality	monoclonal
Isotype	IgG2a Kappa
Clone Names	4C4
Calculated MW	102435

Additional Information

Gene ID	9138
Other Names	Rho guanine nucleotide exchange factor 1, 115 kDa guanine nucleotide exchange factor, p115-RhoGEF, p115RhoGEF, Sub15, ARHGEF1
Target/Specificity	ARHGEF1 (AAH34013.2, 830 a.a. ~ 927 a.a) partial recombinant protein with GST tag. MW of the GST tag alone is 26 KDa.
Dilution	WB~~1:500~1000 IF~~1:50~200 E~~N/A
Format	Clear, colorless solution in phosphate buffered saline, pH 7.2 .
Storage	Store at -20°C or lower. Aliquot to avoid repeated freezing and thawing.
Precautions	ARHGEF1 Antibody (monoclonal) (M03) is for research use only and not for use in diagnostic or therapeutic procedures.

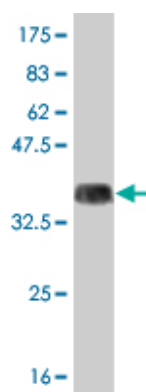
Background

Rho GTPases play a fundamental role in numerous cellular processes that are initiated by extracellular stimuli that work through G protein coupled receptors. The encoded protein may form complex with G proteins and stimulate Rho-dependent signals. Multiple alternatively spliced transcript variants have been found for this gene, but the full-length nature of some variants has not been defined.

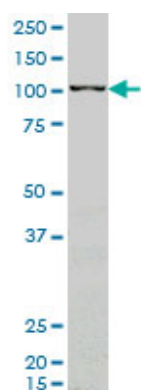
References

1.Loss of lsc/p115-protein leads to neuronal hypoplasia in the esophagus and an achalasia-like phenotype in mice.Zizer E, Beilke S, Bauerle T, Schilling K, Mohnle U, Adler G, Fischer KD, Wagner M.Gastroenterology.

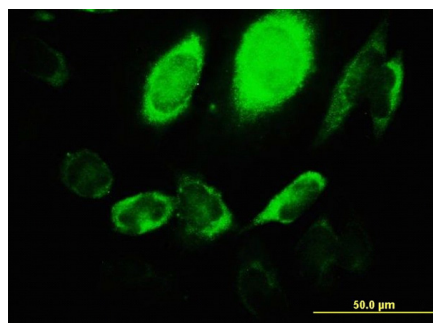
Images



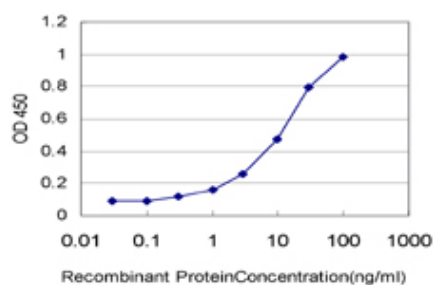
Antibody Reactive Against Recombinant Protein. Western Blot detection against Immunogen (36.41 KDa) .



ARHGEF1 monoclonal antibody (M03), clone 4C4 Western Blot analysis of ARHGEF1 expression in K-562 ((Cat # AT1185a)



Immunofluorescence of monoclonal antibody to ARHGEF1 on HeLa cell. [antibody concentration 10 ug/ml]



Detection limit for recombinant GST tagged ARHGEF1 is approximately 0.3ng/ml as a capture antibody.

Please note: All products are 'FOR RESEARCH USE ONLY. NOT FOR USE IN DIAGNOSTIC OR THERAPEUTIC PROCEDURES'.