

# ARHGEF11 Antibody (monoclonal) (M02)

Mouse monoclonal antibody raised against a partial recombinant ARHGEF11.

Catalog # AT1186a

## Product Information

---

<b>Application</b>	WB, E
<b>Primary Accession</b>	<a href="#">O15085</a>
<b>Other Accession</b>	<a href="#">BC057394</a>
<b>Reactivity</b>	Human
<b>Host</b>	mouse
<b>Clonality</b>	monoclonal
<b>Isotype</b>	IgG1 Kappa
<b>Clone Names</b>	2F4
<b>Calculated MW</b>	167704

## Additional Information

---

<b>Gene ID</b>	9826
<b>Other Names</b>	Rho guanine nucleotide exchange factor 11, PDZ-RhoGEF, ARHGEF11, KIAA0380
<b>Target/Specificity</b>	ARHGEF11 (AAH57394, 651 a.a. ~ 750 a.a) partial recombinant protein with GST tag. MW of the GST tag alone is 26 KDa.
<b>Dilution</b>	WB~~1:500~1000 E~~N/A
<b>Format</b>	Clear, colorless solution in phosphate buffered saline, pH 7.2 .
<b>Storage</b>	Store at -20°C or lower. Aliquot to avoid repeated freezing and thawing.
<b>Precautions</b>	ARHGEF11 Antibody (monoclonal) (M02) is for research use only and not for use in diagnostic or therapeutic procedures.

## Background

---

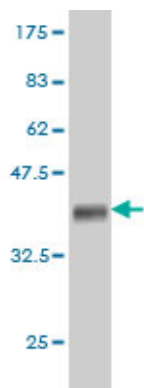
Rho GTPases play a fundamental role in numerous cellular processes that are initiated by extracellular stimuli that work through G protein coupled receptors. The encoded protein may form a complex with G proteins and stimulate Rho-dependent signals. A similar protein in rat interacts with glutamate transporter EAAT4 and modulates its glutamate transport activity. Expression of the rat protein induces the reorganization of the actin cytoskeleton and its overexpression induces the formation of membrane ruffling and filopodia. Two alternative transcripts encoding different isoforms have been described.

## References

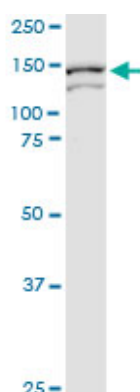
---

Genome-wide association study to identify genetic variants present in Japanese patients harboring intracranial aneurysms. Akiyama K, et al. J Hum Genet, 2010 Jul 8. PMID 20613766. Personalized smoking cessation: interactions between nicotine dose, dependence and quit-success genotype score. Rose JE, et al. Mol Med, 2010 Jul-Aug. PMID 20379614. PYK2/PDZ-RhoGEF links Ca<sup>2+</sup> signaling to RhoA. Ying Z, et al. Arterioscler Thromb Vasc Biol, 2009 Oct. PMID 19759375. The amino acid motif L/IxxFE defines a novel actin-binding sequence in PDZ-RhoGEF. Banerjee J, et al. Biochemistry, 2009 Aug 25. PMID 19618964. On the mechanism of autoinhibition of the RhoA-specific nucleotide exchange factor PDZ-RhoGEF. Zheng M, et al. BMC Struct Biol, 2009 May 21. PMID 19460155.

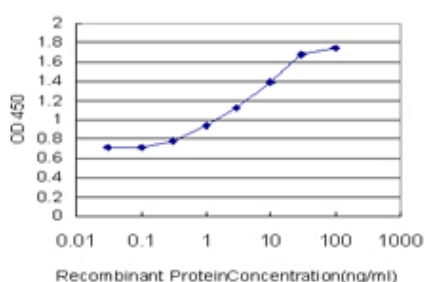
## Images



Antibody Reactive Against Recombinant Protein. Western Blot detection against Immunogen (36.63 KDa) .



ARHGEF11 monoclonal antibody (M02), clone 2F4. Western Blot analysis of ARHGEF11 expression in human colon.



Detection limit for recombinant GST tagged ARHGEF11 is approximately 0.3ng/ml as a capture antibody.

Please note: All products are 'FOR RESEARCH USE ONLY. NOT FOR USE IN DIAGNOSTIC OR THERAPEUTIC PROCEDURES'.