

ARHGEF5 Antibody (monoclonal) (M01)

Mouse monoclonal antibody raised against a full length recombinant ARHGEF5.

Catalog # AT1187a

Product Information

Application	WB, E
Primary Accession	Q12774
Other Accession	BC014555
Reactivity	Human
Host	mouse
Clonality	monoclonal
Isotype	IgG2a Kappa
Clone Names	S2
Calculated MW	176799

Additional Information

Gene ID	7984
Other Names	Rho guanine nucleotide exchange factor 5, Ephexin-3, Guanine nucleotide regulatory protein TIM, Oncogene TIM, Transforming immortalized mammary oncogene, p60 TIM, ARHGEF5, TIM
Target/Specificity	ARHGEF5 (AAH14555, 1 a.a. ~ 519 a.a) full-length recombinant protein with GST tag. MW of the GST tag alone is 26 KDa.
Dilution	WB~~1:500~1000 E~~N/A
Format	Clear, colorless solution in phosphate buffered saline, pH 7.2 .
Storage	Store at -20°C or lower. Aliquot to avoid repeated freezing and thawing.
Precautions	ARHGEF5 Antibody (monoclonal) (M01) is for research use only and not for use in diagnostic or therapeutic procedures.

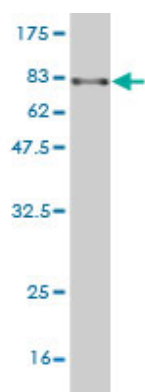
Background

Rho GTPases play a fundamental role in numerous cellular processes initiated by extracellular stimuli that work through G protein coupled receptors. The encoded protein may form a complex with G proteins and stimulate Rho-dependent signals. This protein may be involved in the control of cytoskeletal organization.

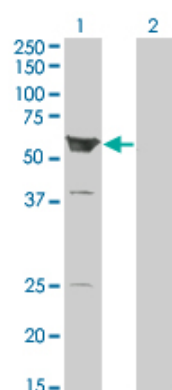
References

1.Identification of gains on 1q and epidermal growth factor receptor overexpression as independent prognostic markers in intracranial ependymoma.Mendrzyk F, Korshunov A, Benner A, Toedt G, Pfister S,

Images

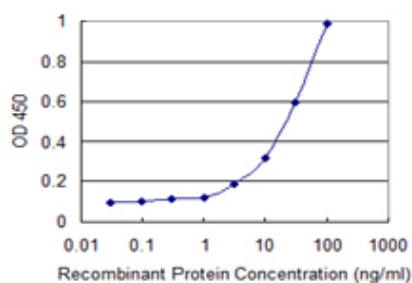


Antibody Reactive Against Recombinant Protein. Western Blot detection against Immunogen (82.83 KDa) .



Western Blot analysis of ARHGEF5 expression in transfected 293T cell line by ARHGEF5 monoclonal antibody (M01), clone 3A12-B5.

Lane 1: ARHGEF5 transfected lysate (60.1 KDa).
Lane 2: Non-transfected lysate.



Detection limit for recombinant GST tagged ARHGEF5 is 1 ng/ml as a capture antibody.

Please note: All products are 'FOR RESEARCH USE ONLY. NOT FOR USE IN DIAGNOSTIC OR THERAPEUTIC PROCEDURES'.