

# ARID1B Antibody (monoclonal) (M01)

Mouse monoclonal antibody raised against a partial recombinant ARID1B.

Catalog # AT1189a

## Product Information

---

<b>Application</b>	WB, IHC, IF, E
<b>Primary Accession</b>	<a href="#">Q8NFD5</a>
<b>Other Accession</b>	<a href="#">NM_017519</a>
<b>Reactivity</b>	Human
<b>Host</b>	Mouse
<b>Clonality</b>	monoclonal
<b>Isotype</b>	IgG2b Kappa
<b>Clone Names</b>	2D2
<b>Calculated MW</b>	243943

## Additional Information

---

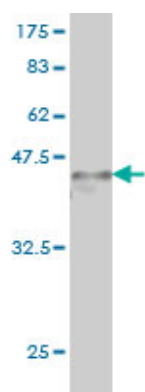
<b>Gene ID</b>	57492
<b>Other Names</b>	AT-rich interactive domain-containing protein 1B, ARID domain-containing protein 1B, BRG1-associated factor 250b, BAF250B, BRG1-binding protein hELD/OSA1, Osa homolog 2, hOsa2, p250R, ARID1B, BAF250B, DAN15, KIAA1235, OSA2
<b>Target/Specificity</b>	ARID1B (NP_059989, 1364 a.a. ~ 1460 a.a) partial recombinant protein with GST tag. MW of the GST tag alone is 26 KDa.
<b>Dilution</b>	WB~~1:500~1000 IHC~~1:100~500 IF~~1:50~200 E~~N/A
<b>Format</b>	Clear, colorless solution in phosphate buffered saline, pH 7.2 .
<b>Storage</b>	Store at -20°C or lower. Aliquot to avoid repeated freezing and thawing.
<b>Precautions</b>	ARID1B Antibody (monoclonal) (M01) is for research use only and not for use in diagnostic or therapeutic procedures.

## References

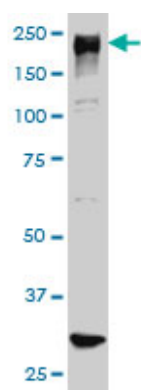
---

Generalist genes analysis of DNA markers associated with mathematical ability and disability reveals shared influence across ages and abilities. Docherty SJ, et al. BMC Genet, 2010 Jul 5. PMID 20602751. Personalized smoking cessation: interactions between nicotine dose, dependence and quit-success genotype score. Rose JE, et al. Mol Med, 2010 Jul-Aug. PMID 20379614. Genome-wide interrogation of germline genetic variation associated with treatment response in childhood acute lymphoblastic leukemia. Yang JJ, et al. JAMA, 2009 Jan 28. PMID 19176441. Toward a confocal subcellular atlas of the human proteome. Barbe L, et al. Mol Cell Proteomics, 2008 Mar. PMID 18029348. Distinct mammalian SWI/SNF chromatin remodeling complexes with

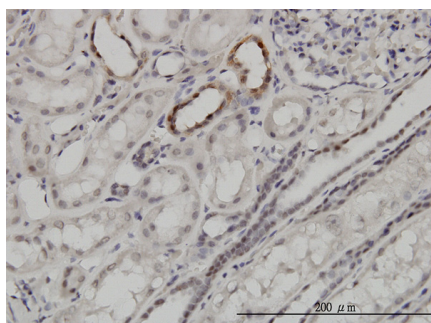
## Images



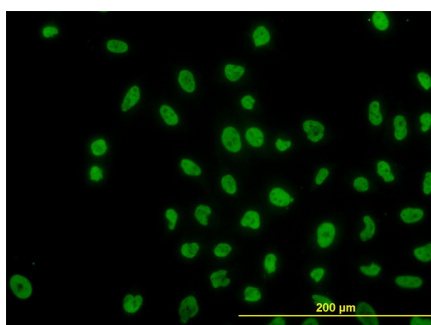
Antibody Reactive Against Recombinant Protein. Western Blot detection against Immunogen (36.41 KDa) .



ARID1B monoclonal antibody (M01), clone 2D2 Western Blot analysis of ARID1B expression in HeLa S3 NE ( (Cat # AT1189a )

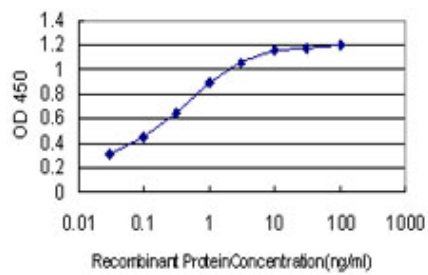


Immunoperoxidase of monoclonal antibody to ARID1B on formalin-fixed paraffin-embedded human kidney. [antibody concentration 3 ug/ml]



Immunofluorescence of monoclonal antibody to ARID1B on HeLa cell. [antibody concentration 10 ug/ml]

Detection limit for recombinant GST tagged ARID1B is approximately 0.03ng/ml as a capture antibody.



## Citations

---

- [ARID1A spatially partitions interphase chromosomes.](#)
- [SWI/SNF catalytic subunits' switch drives resistance to EZH2 inhibitors in ARID1A-mutated cells.](#)
- [SWI/SNF factors required for cellular resistance to DNA damage include ARID1A and ARID1B and show interdependent protein stability.](#)

Please note: All products are 'FOR RESEARCH USE ONLY. NOT FOR USE IN DIAGNOSTIC OR THERAPEUTIC PROCEDURES'.