

ARMC4 Antibody (monoclonal) (M02)

Mouse monoclonal antibody raised against a partial recombinant ARMC4.

Catalog # AT1195a

Product Information

Application	WB, E
Primary Accession	Q5T2S8
Other Accession	NM_018076
Reactivity	Human
Host	mouse
Clonality	monoclonal
Isotype	IgG1 Kappa
Clone Names	5F1
Calculated MW	115679

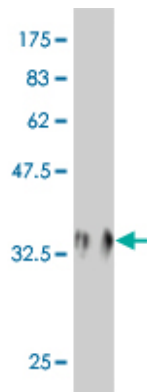
Additional Information

Gene ID	55130
Other Names	Armadillo repeat-containing protein 4, ARMC4
Target/Specificity	ARMC4 (NP_060546, 945 a.a. ~ 1044 a.a) partial recombinant protein with GST tag. MW of the GST tag alone is 26 KDa.
Dilution	WB~~1:500~1000 E~~N/A
Format	Clear, colorless solution in phosphate buffered saline, pH 7.2 .
Storage	Store at -20°C or lower. Aliquot to avoid repeated freezing and thawing.
Precautions	ARMC4 Antibody (monoclonal) (M02) is for research use only and not for use in diagnostic or therapeutic procedures.

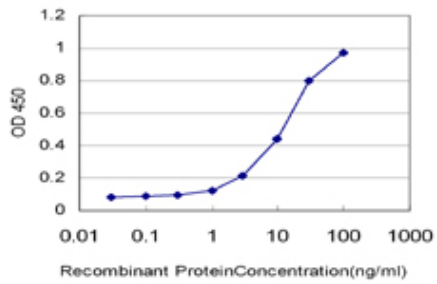
References

A scan of chromosome 10 identifies a novel locus showing strong association with late-onset Alzheimer disease. Grupe A, et al. Am J Hum Genet, 2006 Jan. PMID 16385451. The DNA sequence and comparative analysis of human chromosome 10. Deloukas P, et al. Nature, 2004 May 27. PMID 15164054. Complete sequencing and characterization of 21,243 full-length human cDNAs. Ota T, et al. Nat Genet, 2004 Jan. PMID 14702039. Generation and initial analysis of more than 15,000 full-length human and mouse cDNA sequences. Strausberg RL, et al. Proc Natl Acad Sci U S A, 2002 Dec 24. PMID 12477932. Toward a catalog of human genes and proteins: sequencing and analysis of 500 novel complete protein coding human cDNAs. Wiemann S, et al. Genome Res, 2001 Mar. PMID 11230166.

Images



Antibody Reactive Against Recombinant Protein. Western Blot detection against Immunogen (36.74 KDa) .



Detection limit for recombinant GST tagged ARMC4 is approximately 1 ng/ml as a capture antibody.

Please note: All products are 'FOR RESEARCH USE ONLY. NOT FOR USE IN DIAGNOSTIC OR THERAPEUTIC PROCEDURES'.