

ARVCF Antibody (monoclonal) (M01)

Mouse monoclonal antibody raised against a partial recombinant ARVCF.

Catalog # AT1204a

Product Information

Application	WB, IHC
Primary Accession	O00192
Other Accession	NM_001670
Reactivity	Human
Host	mouse
Clonality	monoclonal
Isotype	IgG1 Kappa
Clone Names	5D2
Calculated MW	104642

Additional Information

Gene ID	421
Other Names	Armadillo repeat protein deleted in velo-cardio-facial syndrome, ARVCF
Target/Specificity	ARVCF (NP_001661, 863 a.a. ~ 962 a.a) partial recombinant protein with GST tag. MW of the GST tag alone is 26 KDa.
Dilution	WB~~1:500~1000 IHC~~1:100~500
Format	Clear, colorless solution in phosphate buffered saline, pH 7.2 .
Storage	Store at -20°C or lower. Aliquot to avoid repeated freezing and thawing.
Precautions	ARVCF Antibody (monoclonal) (M01) is for research use only and not for use in diagnostic or therapeutic procedures.

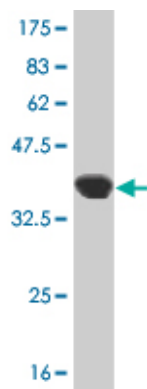
Background

Armadillo Repeat gene deleted in Velo-Cardio-Facial syndrome (ARVCF) is a member of the catenin family. This family plays an important role in the formation of adherens junction complexes, which are thought to facilitate communication between the inside and outside environments of a cell. The ARVCF gene was isolated in the search for the genetic defect responsible for the autosomal dominant Velo-Cardio-Facial syndrome (VCFS), a relatively common human disorder with phenotypic features including cleft palate, conotruncal heart defects and facial dysmorphism. The ARVCF gene encodes a protein containing two motifs, a coiled coil domain in the N-terminus and a 10 armadillo repeat sequence in the midregion. Since these sequences can facilitate protein-protein interactions ARVCF is thought to function in a protein complex. In addition, ARVCF contains a predicted nuclear-targeting sequence suggesting that it may have a function as a nuclear protein.

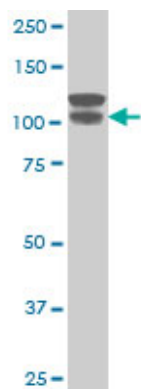
References

1.Xenopus Kazrin interacts with ARVCF-catenin, spectrin and p190B RhoGAP, and modulates RhoA activity and epithelial integrity.Cho K, Vaught TG, Ji H, Gu D, Papasakelariou-Yared C, Horstmann N, Jennings JM, Lee M, Sevilla LM, Kloc M, Reynolds AB, Watt FM, Brennan RG, Kowalczyk AP, McCrea PD.J Cell Sci. 2010 Dec 1;123(Pt 23):4128-44. Epub 2010 Nov 9.

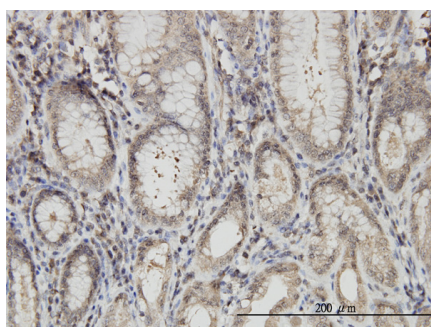
Images



Antibody Reactive Against Recombinant Protein.Western Blot detection against Immunogen (36.74 KDa) .



ARVCF monoclonal antibody (M01), clone 5D2 Western Blot analysis of ARVCF expression in A-431 ((Cat # AT1204a)



Immunoperoxidase of monoclonal antibody to ARVCF on formalin-fixed paraffin-embedded human stomach. [antibody concentration 3 ug/ml]

Please note: All products are 'FOR RESEARCH USE ONLY. NOT FOR USE IN DIAGNOSTIC OR THERAPEUTIC PROCEDURES'.