

## ASL Antibody (monoclonal) (M01)

Mouse monoclonal antibody raised against a full length recombinant ASL.

Catalog # AT1214a

### Product Information

---

<b>Application</b>	WB, IF
<b>Primary Accession</b>	<a href="#">P04424</a>
<b>Other Accession</b>	<a href="#">BC008195</a>
<b>Reactivity</b>	Human
<b>Host</b>	mouse
<b>Clonality</b>	monoclonal
<b>Isotype</b>	IgG1 kappa
<b>Clone Names</b>	4C5-1F2
<b>Calculated MW</b>	51658

### Additional Information

---

<b>Gene ID</b>	435
<b>Other Names</b>	Argininosuccinate lyase, ASAL, Arginosuccinase, ASL
<b>Target/Specificity</b>	ASL (AAH08195, 1 a.a. ~ 464 a.a) full-length recombinant protein with GST tag. MW of the GST tag alone is 26 KDa.
<b>Dilution</b>	WB~~1:500~1000 IF~~1:50~200
<b>Format</b>	Clear, colorless solution in phosphate buffered saline, pH 7.2 .
<b>Storage</b>	Store at -20°C or lower. Aliquot to avoid repeated freezing and thawing.
<b>Precautions</b>	ASL Antibody (monoclonal) (M01) is for research use only and not for use in diagnostic or therapeutic procedures.

### Background

---

This gene encodes a member of the lyase 1 family. The encoded protein forms a cytosolic homotetramer and primarily catalyzes the reversible hydrolytic cleavage of argininosuccinate into arginine and fumarate, an essential step in the liver in detoxifying ammonia via the urea cycle. Mutations in this gene result in the autosomal recessive disorder argininosuccinic aciduria, or argininosuccinic acid lyase deficiency. A nontranscribed pseudogene is also located on the long arm of chromosome 22. Alternatively spliced transcript variants encoding different isoforms have been described.

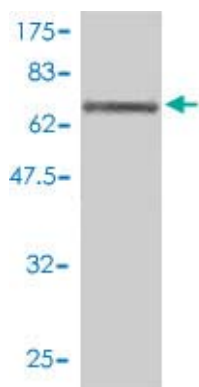
### References

---

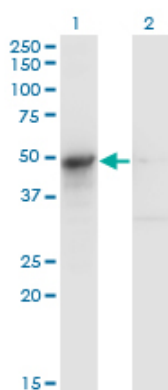
1.Epigenetic status of argininosuccinate synthetase and argininosuccinate lyase modulates autophagy and

cell death in glioblastoma.Syed N, Langer J, Janczar K, Singh P, Lo Nigro C, Lattanzio L, Coley HM, Hatzimichael E, Bomalaski J, Szlosarek P, Awad MCell Death Dis. 2013 Jan 17;4:e458. doi: 10.1038/cddis.2012.197.

## Images

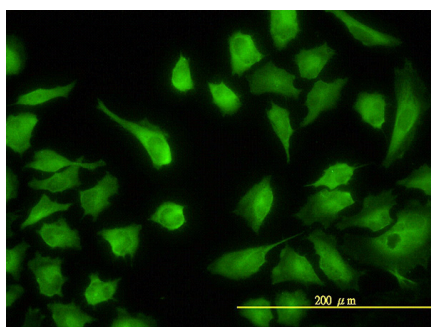


Antibody Reactive Against Recombinant Protein.Western Blot detection against Immunogen (76.78 KDa) .



Western Blot analysis of ASL expression in transfected 293T cell line by ASL monoclonal antibody (M01), clone 4C5-1F2.

Lane 1: ASL transfected lysate(51.7 KDa).  
Lane 2: Non-transfected lysate.



Immunofluorescence of monoclonal antibody to ASL on HeLa cell. [antibody concentration 5 ug/ml]

Please note: All products are 'FOR RESEARCH USE ONLY. NOT FOR USE IN DIAGNOSTIC OR THERAPEUTIC PROCEDURES'.