

ASNA1 Antibody (monoclonal) (M03)

Mouse monoclonal antibody raised against a partial recombinant ASNA1.

Catalog # AT1216a

Product Information

Application	WB, IHC, IF, E
Primary Accession	O43681
Other Accession	NM_004317
Reactivity	Human, Rat
Host	mouse
Clonality	monoclonal
Isotype	IgG1 Kappa
Clone Names	2H3
Calculated MW	38793

Additional Information

Gene ID	439
Other Names	ATPase ASNA1 {ECO:0000255 HAMAP-Rule:MF_03112}, 36-- {ECO:0000255 HAMAP-Rule:MF_03112}, Arsenical pump-driving ATPase {ECO:0000255 HAMAP-Rule:MF_03112}, Arsenite-stimulated ATPase {ECO:0000255 HAMAP-Rule:MF_03112}, Transmembrane domain recognition complex 40 kDa ATPase subunit, hARSA-I, hASNA-I, ASNA1 {ECO:0000255 HAMAP-Rule:MF_03112}, ARSA, TRC40
Target/Specificity	ASNA1 (NP_004308, 239 a.a. ~ 348 a.a) partial recombinant protein with GST tag. MW of the GST tag alone is 26 kDa.
Dilution	WB~~1:500~1000 IHC~~1:100~500 IF~~1:50~200 E~~N/A
Format	Clear, colorless solution in phosphate buffered saline, pH 7.2 .
Storage	Store at -20°C or lower. Aliquot to avoid repeated freezing and thawing.
Precautions	ASNA1 Antibody (monoclonal) (M03) is for research use only and not for use in diagnostic or therapeutic procedures.

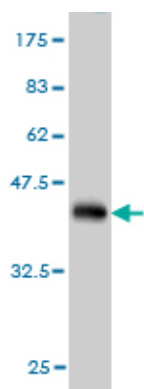
Background

ASNA1 is the human homolog of the bacterial arsA gene. In E. coli, ArsA ATPase is the catalytic component of a multisubunit oxyanion pump that is responsible for resistance to arsenicals and antimonials.

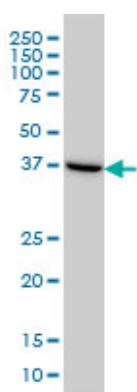
References

1.A precursor specific role for Hsp40/Hsc70 during tail-anchored protein integration at the endoplasmic reticulum. Rabu C, Wipf P, Brodsky JL, High SJ Biol Chem. 2008 Oct 10;283(41):27504-13. Epub 2008 Jul 29.

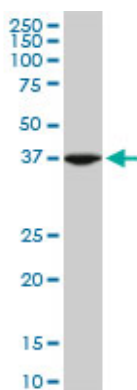
Images



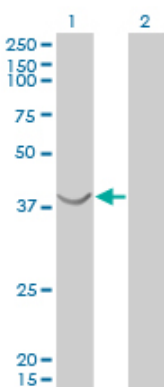
Antibody Reactive Against Recombinant Protein. Western Blot detection against Immunogen (37.84 KDa) .



ASNA1 monoclonal antibody (M03), clone 2H3 Western Blot analysis of ASNA1 expression in HeLa ((Cat # AT1216a)



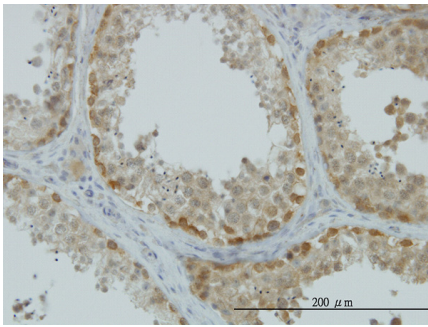
ASNA1 monoclonal antibody (M03), clone 2H3. Western Blot analysis of ASNA1 expression in PC-12 ((Cat # AT1216a)



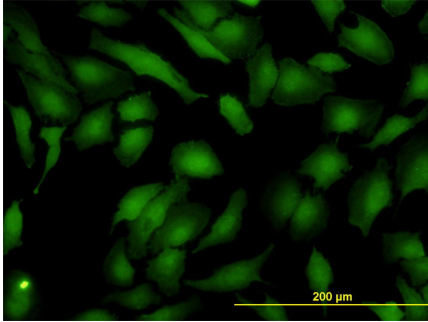
Western Blot analysis of ASNA1 expression in transfected 293T cell line by ASNA1 monoclonal antibody (M03), clone 2H3.

Lane 1: ASNA1 transfected lysate(38.8 KDa).
Lane 2: Non-transfected lysate.

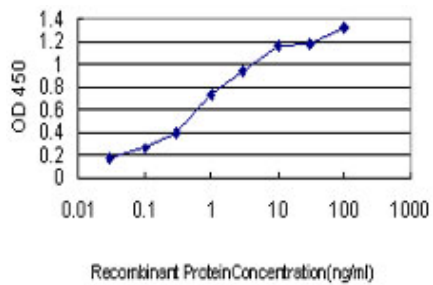
Immunoperoxidase of monoclonal antibody to ASNA1 on formalin-fixed paraffin-embedded human testis.



[antibody concentration 0.5 ug/ml]



Immunofluorescence of monoclonal antibody to ASNA1 on HeLa cell. [antibody concentration 10 ug/ml]



Detection limit for recombinant GST tagged ASNA1 is approximately 0.03ng/ml as a capture antibody.

Please note: All products are 'FOR RESEARCH USE ONLY. NOT FOR USE IN DIAGNOSTIC OR THERAPEUTIC PROCEDURES'.