

ATOX1 Antibody (monoclonal) (M08)

Mouse monoclonal antibody raised against a partial recombinant ATOX1.
Catalog # AT1229a

Product Information

Application	WB, E
Primary Accession	O00244
Other Accession	NM_004045
Reactivity	Human
Host	mouse
Clonality	monoclonal
Isotype	IgG2a Kappa
Clone Names	4D6

Additional Information

Other Names	Copper transport protein ATOX1, Metal transport protein ATX1, ATOX1, HAH1
Target/Specificity	ATOX1 (NP_004036, 1 a.a. ~ 68 a.a) partial recombinant protein with GST tag. MW of the GST tag alone is 26 KDa.
Dilution	WB~~1:500~1000 E~~N/A
Format	Clear, colorless solution in phosphate buffered saline, pH 7.2 .
Storage	Store at -20°C or lower. Aliquot to avoid repeated freezing and thawing.
Precautions	ATOX1 Antibody (monoclonal) (M08) is for research use only and not for use in diagnostic or therapeutic procedures.

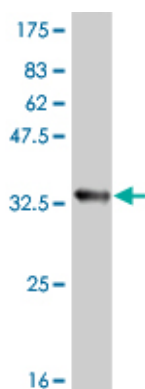
Background

This gene encodes a copper chaperone that plays a role in copper homeostasis by binding and transporting cytosolic copper to ATPase proteins in the trans-Golgi network for later incorporation to the ceruloplasmin. This protein also functions as an antioxidant against superoxide and hydrogen peroxide, and therefore, may play a significant role in cancer carcinogenesis. Because of its cytogenetic location, this gene represents a candidate gene for 5q-syndrome.

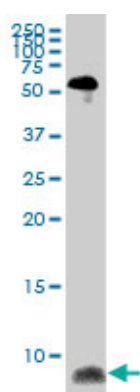
References

Copper(I)-mediated protein-protein interactions result from suboptimal interaction surfaces. Banci L, et al. *Biochem J*, 2009 Jul 29. PMID 19453293. Differential roles of Met10, Thr11, and Lys60 in structural dynamics of human copper chaperone Atox1. Rodriguez-Granillo A, et al. *Biochemistry*, 2009 Feb 10. PMID 19146392. Conserved residues modulate copper release in human copper chaperone Atox1. Hussain F, et al. *Proc Natl Acad Sci U S A*, 2008 Aug 12. PMID 18685091. Metal binding domains 3 and 4 of the Wilson disease protein: solution structure and interaction with the copper(I) chaperone HAH1. Banci L, et al. *Biochemistry*,

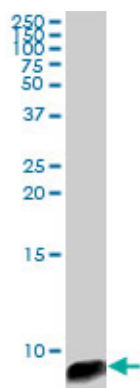
Images



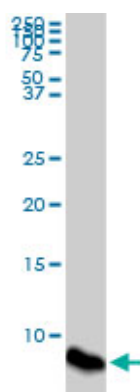
Antibody Reactive Against Recombinant Protein. Western Blot detection against Immunogen (33.22 KDa) .



ATOX1 monoclonal antibody (M08), clone 4D6. Western Blot analysis of ATOX1 expression in human spleen.

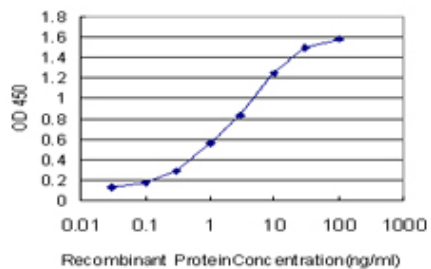


ATOX1 monoclonal antibody (M08), clone 4D6. Western Blot analysis of ATOX1 expression in HepG2 ((Cat # AT1229a)



ATOX1 monoclonal antibody (M08), clone 4D6. Western Blot analysis of ATOX1 expression in COLO 320 HSR ((Cat # AT1229a)

Detection limit for recombinant GST tagged ATOX1 is approximately 0.03ng/ml as a capture antibody.



Please note: All products are 'FOR RESEARCH USE ONLY. NOT FOR USE IN DIAGNOSTIC OR THERAPEUTIC PROCEDURES'.