

ATP2A3 Antibody (monoclonal) (M01)

Mouse monoclonal antibody raised against a partial recombinant ATP2A3.

Catalog # AT1234a

Product Information

Application	WB, IHC, E
Primary Accession	Q93084
Other Accession	BC035729
Reactivity	Human
Host	mouse
Clonality	monoclonal
Isotype	IgG2a Kappa
Clone Names	2H3
Calculated MW	109256

Additional Information

Gene ID	489
Other Names	Sarcoplasmic/endoplasmic reticulum calcium ATPase 3, SERCA3, SR Ca(2+)-ATPase 3, Calcium pump 3, ATP2A3
Target/Specificity	ATP2A3 (AAH35729, 501 a.a. ~ 620 a.a) partial recombinant protein with GST tag. MW of the GST tag alone is 26 KDa.
Dilution	WB~~1:500~1000 IHC~~1:100~500 E~~N/A
Format	Clear, colorless solution in phosphate buffered saline, pH 7.2 .
Storage	Store at -20°C or lower. Aliquot to avoid repeated freezing and thawing.
Precautions	ATP2A3 Antibody (monoclonal) (M01) is for research use only and not for use in diagnostic or therapeutic procedures.

Background

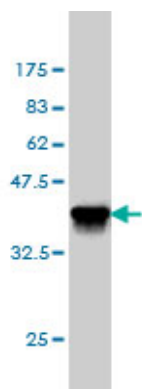
This gene encodes one of the SERCA Ca(2+)-ATPases, which are intracellular pumps located in the sarcoplasmic or endoplasmic reticula of muscle cells. This enzyme catalyzes the hydrolysis of ATP coupled with the translocation of calcium from the cytosol to the sarcoplasmic reticulum lumen, and is involved in calcium sequestration associated with muscular excitation and contraction. Alternative splicing results in multiple transcript variants encoding different isoforms.

References

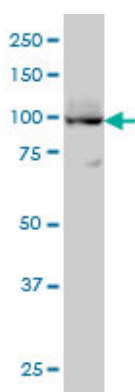
- 1.Modulation of endoplasmic reticulum calcium pump expression during lung cancer cell

differentiation. Arbabian A, Brouland JP, Apati A, Paszty K, Hegedus L, Enyedi A, Chomienne C, Papp B. FEBS J. 2012 Nov 15. doi: 10.1111/febs.12064. 2. Expression of Sarco/Endoplasmic Reticulum Ca²⁺-ATPase (SERCA) 3 proteins in two major conformational states in native human cell membranes. Corvazier E, Bredoux R, Kovacs T, Enouf J. Biochim Biophys Acta. 2009 Mar;1788(3):587-99. Epub 2008 Dec 16.

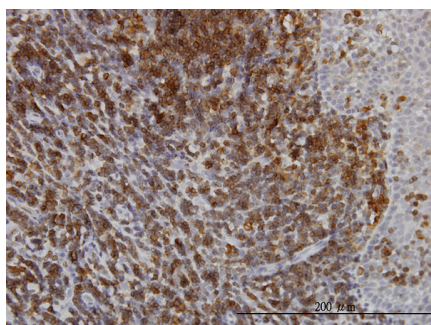
Images



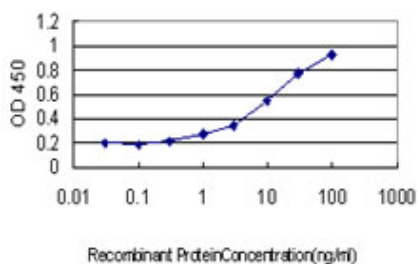
Antibody Reactive Against Recombinant Protein. Western Blot detection against Immunogen (38.94 KDa) .



ATP2A3 monoclonal antibody (M01), clone 2H3 Western Blot analysis of ATP2A3 expression in HL-60 (Cat # AT1234a)



Immunoperoxidase of monoclonal antibody to ATP2A3 on formalin-fixed paraffin-embedded human tonsil. [antibody concentration 3 ug/ml]



Detection limit for recombinant GST tagged ATP2A3 is approximately 0.3 ng/ml as a capture antibody.

Please note: All products are 'FOR RESEARCH USE ONLY. NOT FOR USE IN DIAGNOSTIC OR THERAPEUTIC PROCEDURES'.