

ATPIF1 Antibody (monoclonal) (M01)

Mouse monoclonal antibody raised against a full length recombinant ATPIF1.

Catalog # AT1245a

Product Information

Application	WB, IF, E
Primary Accession	Q9UII2
Other Accession	BC009677
Reactivity	Human
Host	mouse
Clonality	monoclonal
Isotype	IgG2b kappa
Clone Names	3E3
Calculated MW	12249

Additional Information

Gene ID	93974
Other Names	ATPase inhibitor, mitochondrial, Inhibitor of F(1)F(o)-ATPase, IF(1), IF1, ATPIF1, ATPi
Target/Specificity	ATPIF1 (AAH09677, 1 a.a. ~ 106 a.a) full-length recombinant protein with GST tag. MW of the GST tag alone is 26 KDa.
Dilution	WB~~1:500~1000 IF~~1:50~200 E~~N/A
Format	Clear, colorless solution in phosphate buffered saline, pH 7.2 .
Storage	Store at -20°C or lower. Aliquot to avoid repeated freezing and thawing.
Precautions	ATPIF1 Antibody (monoclonal) (M01) is for research use only and not for use in diagnostic or therapeutic procedures.

Background

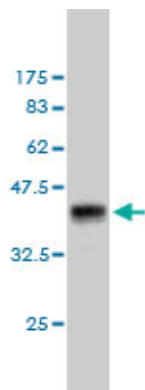
This gene encodes a mitochondrial ATPase inhibitor. Alternative splicing occurs at this locus and three transcript variants encoding distinct isoforms have been identified.

References

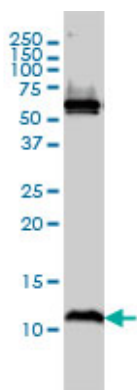
Up-regulation of the ATPase inhibitory factor 1 (IF1) of the mitochondrial H⁺-ATP synthase in human tumors mediates the metabolic shift of cancer cells to a Warburg phenotype. S2nchez-Cenizo L, et al. J Biol Chem, 2010 Aug 13. PMID 20538613. Personalized smoking cessation: interactions between nicotine dose, dependence and quit-success genotype score. Rose JE, et al. Mol Med, 2010 Jul-Aug. PMID

20379614.Mutation detection in candidate genes for benign familial infantile seizures on a novel locus. Li N, et al. Int J Neurosci, 2010 Mar. PMID 20374090.IF(1) distribution in HepG2 cells in relation to ecto-F(0)F (1)ATP synthase and calmodulin. Contessi S, et al. J Bioenerg Biomembr, 2007 Aug. PMID 17851741.Identifying leukocyte gene expression patterns associated with plasma lipid levels in human subjects. Ma J, et al. Atherosclerosis, 2007 Mar. PMID 16806233.

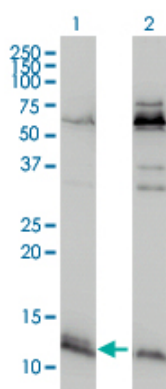
Images



Antibody Reactive Against Recombinant Protein.Western Blot detection against Immunogen (37.4 KDa) .

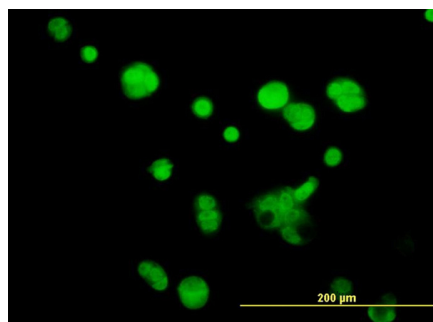


ATPIF1 monoclonal antibody (M01), clone 3E2 Western Blot analysis of ATPIF1 expression in MCF-7 ((Cat # AT1245a)



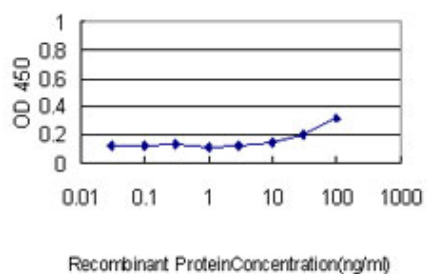
Western Blot analysis of ATPIF1 expression in transfected 293T cell line by ATPIF1 monoclonal antibody (M01), clone 3E2.

Lane 1: ATPIF1 transfected lysate(12 KDa).
Lane 2: Non-transfected lysate.



Immunofluorescence of monoclonal antibody to ATPIF1 on MCF-7 cell . [antibody concentration 10 ug/ml]

Detection limit for recombinant GST tagged ATPIF1 is



approximately 0.3ng/ml as a capture antibody.

Please note: All products are 'FOR RESEARCH USE ONLY. NOT FOR USE IN DIAGNOSTIC OR THERAPEUTIC PROCEDURES'.