

BAG1 Antibody (monoclonal) (M01)

Mouse monoclonal antibody raised against a partial recombinant BAG1.

Catalog # AT1259a

Product Information

Application	WB, IF, E
Primary Accession	Q99933
Other Accession	NM_004323
Reactivity	Human
Host	mouse
Clonality	monoclonal
Isotype	IgG2a kappa
Clone Names	4E3
Calculated MW	38779

Additional Information

Gene ID	573
Other Names	BAG family molecular chaperone regulator 1, BAG-1, Bcl-2-associated athanogene 1, BAG1, HAP
Target/Specificity	BAG1 (NP_004314, 241 a.a. ~ 345 a.a) partial recombinant protein with GST tag. MW of the GST tag alone is 26 KDa.
Dilution	WB~~1:500~1000 IF~~1:50~200 E~~N/A
Format	Clear, colorless solution in phosphate buffered saline, pH 7.2 .
Storage	Store at -20°C or lower. Aliquot to avoid repeated freezing and thawing.
Precautions	BAG1 Antibody (monoclonal) (M01) is for research use only and not for use in diagnostic or therapeutic procedures.

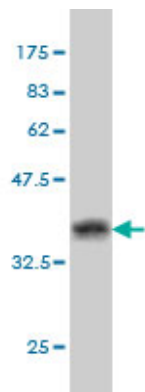
Background

The oncogene BCL2 is a membrane protein that blocks a step in a pathway leading to apoptosis or programmed cell death. The protein encoded by this gene binds to BCL2 and is referred to as BCL2-associated athanogene. It enhances the anti-apoptotic effects of BCL2 and represents a link between growth factor receptors and anti-apoptotic mechanisms. Multiple protein isoforms are encoded by this mRNA through the use of a non-AUG (CUG) initiation codon, and three alternative downstream AUG initiation codons. A related pseudogene has been defined on chromosome X.

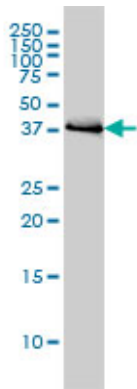
References

Variation at the NFATC2 Locus Increases the Risk of Thiazolinedinedione-Induced Edema in the Diabetes REduction Assessment with ramipril and rosiglitazone Medication (DREAM) Study. Bailey SD, et al. Diabetes Care, 2010 Jul 13. PMID 20628086.New genetic associations detected in a host response study to hepatitis B vaccine. Davila S, et al. Genes Immun, 2010 Apr. PMID 20237496.BAG1 restores formation of functional DJ-1 L166P dimers and DJ-1 chaperone activity. Deeg S, et al. J Cell Biol, 2010 Feb 22. PMID 20156966.Nuclear or cytoplasmic localization of Bag-1 distinctly correlates with pathologic behavior and outcome of gastric carcinomas. Zheng HC, et al. Hum Pathol, 2010 May. PMID 20096920.Gene-centric association signals for lipids and apolipoproteins identified via the HumanCVD BeadChip. Talmud PJ, et al. Am J Hum Genet, 2009 Nov. PMID 19913121.

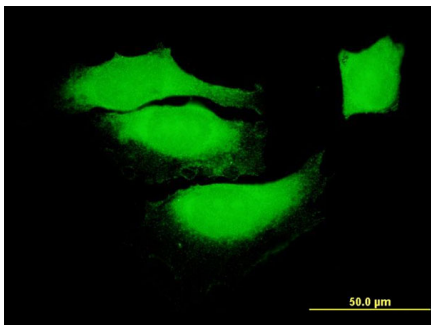
Images



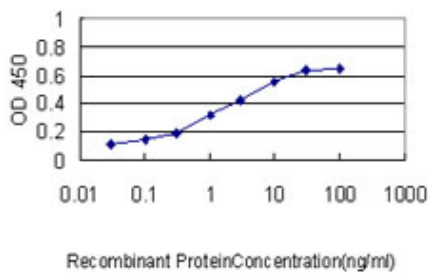
Antibody Reactive Against Recombinant Protein.Western Blot detection against Immunogen (37.29 KDa) .



BAG1 monoclonal antibody (M01), clone 4E2 Western Blot analysis of BAG1 expression in HeLa (Cat # AT1259a)



Immunofluorescence of monoclonal antibody to BAG1 on HeLa cell. [antibody concentration 10 ug/ml]



Detection limit for recombinant GST tagged BAG1 is approximately 0.1ng/ml as a capture antibody.

Please note: All products are 'FOR RESEARCH USE ONLY. NOT FOR USE IN DIAGNOSTIC OR THERAPEUTIC PROCEDURES'.