

## BAG1 Antibody (monoclonal) (M02)

Mouse monoclonal antibody raised against a partial recombinant BAG1.

Catalog # AT1260a

### Product Information

---

|                          |                           |
|--------------------------|---------------------------|
| <b>Application</b>       | WB, IHC, IF, E            |
| <b>Primary Accession</b> | <a href="#">Q99933</a>    |
| <b>Other Accession</b>   | <a href="#">NM_004323</a> |
| <b>Reactivity</b>        | Human, Mouse, Rat         |
| <b>Host</b>              | mouse                     |
| <b>Clonality</b>         | monoclonal                |
| <b>Isotype</b>           | IgG2a Kappa               |
| <b>Clone Names</b>       | 2D3                       |
| <b>Calculated MW</b>     | 38779                     |

### Additional Information

---

|                           |  |
|---------------------------|--|
| <b>Gene ID</b>            | 573  |
| <b>Other Names</b>        | BAG family molecular chaperone regulator 1, BAG-1, Bcl-2-associated athanogene 1, BAG1, HAP                        |
| <b>Target/Specificity</b> | BAG1 (NP_004314, 241 a.a. ~ 345 a.a) partial recombinant protein with GST tag. MW of the GST tag alone is 26 KDa.  |
| <b>Dilution</b>           | WB~~1:500~1000 IHC~~1:100~500 IF~~1:50~200 E~~N/A  |
| <b>Format</b>             | Clear, colorless solution in phosphate buffered saline, pH 7.2 .   |
| <b>Storage</b>            | Store at -20°C or lower. Aliquot to avoid repeated freezing and thawing.   |
| <b>Precautions</b>        | BAG1 Antibody (monoclonal) (M02) is for research use only and not for use in diagnostic or therapeutic procedures. |

### Background

---

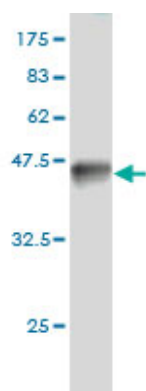
The oncogene BCL2 is a membrane protein that blocks a step in a pathway leading to apoptosis or programmed cell death. The protein encoded by this gene binds to BCL2 and is referred to as BCL2-associated athanogene. It enhances the anti-apoptotic effects of BCL2 and represents a link between growth factor receptors and anti-apoptotic mechanisms. Multiple protein isoforms are encoded by this mRNA through the use of a non-AUG (CUG) initiation codon, and three alternative downstream AUG initiation codons. A related pseudogene has been defined on chromosome X.

### References

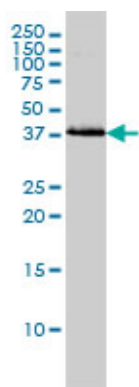
---

Variation at the NFATC2 Locus Increases the Risk of Thiazolinedinedione-Induced Edema in the Diabetes REduction Assessment with ramipril and rosiglitazone Medication (DREAM) Study. Bailey SD, et al. Diabetes Care, 2010 Jul 13. PMID 20628086. New genetic associations detected in a host response study to hepatitis B vaccine. Davila S, et al. Genes Immun, 2010 Apr. PMID 20237496. BAG1 restores formation of functional DJ-1 L166P dimers and DJ-1 chaperone activity. Deeg S, et al. J Cell Biol, 2010 Feb 22. PMID 20156966. Nuclear or cytoplasmic localization of Bag-1 distinctly correlates with pathologic behavior and outcome of gastric carcinomas. Zheng HC, et al. Hum Pathol, 2010 May. PMID 20096920. Gene-centric association signals for lipids and apolipoproteins identified via the HumanCVD BeadChip. Talmud PJ, et al. Am J Hum Genet, 2009 Nov. PMID 19913121.

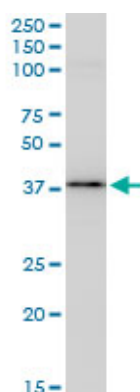
## Images



Antibody Reactive Against Recombinant Protein. Western Blot detection against Immunogen (37.29 KDa) .

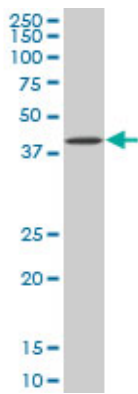


BAG1 monoclonal antibody (M02), clone 2D3 Western Blot analysis of BAG1 expression in HeLa ( (Cat # AT1260a )

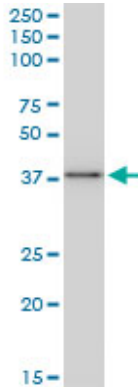


BAG1 monoclonal antibody (M02), clone 2D3. Western Blot analysis of BAG1 expression in PC-12((Cat # AT1260a )

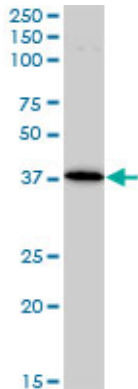
BAG1 monoclonal antibody (M02), clone 2D3. Western Blot analysis of BAG1 expression in LNCaP ( (Cat # AT1260a )



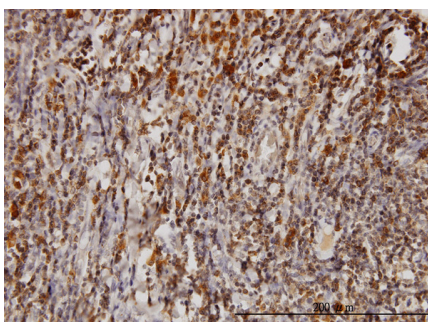
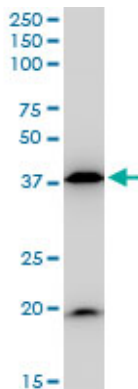
BAG1 monoclonal antibody (M02), clone 2D3. Western Blot analysis of BAG1 expression in Raw 264.7((Cat # AT1260a )



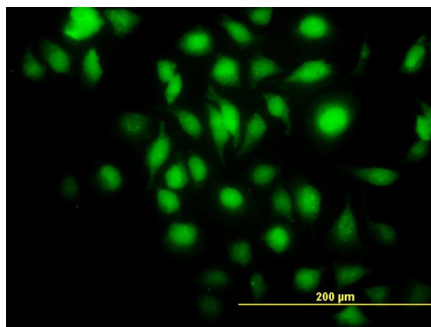
BAG1 monoclonal antibody (M02), clone 2D3. Western Blot analysis of BAG1 expression in Jurkat ( (Cat # AT1260a )



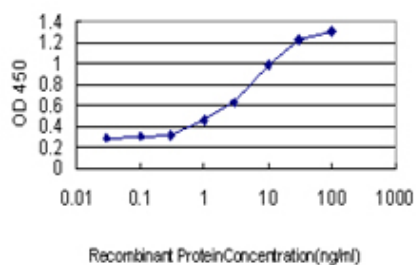
BAG1 monoclonal antibody (M02), clone 2D3. Western Blot analysis of BAG1 expression in NIH/3T3((Cat # AT1260a )



Immunoperoxidase of monoclonal antibody to BAG1 on formalin-fixed paraffin-embedded human tonsil. [antibody concentration 3 ug/ml]



Immunofluorescence of monoclonal antibody to BAG1 on HeLa cell. [antibody concentration 35 ug/ml]



Detection limit for recombinant GST tagged BAG1 is approximately 0.03ng/ml as a capture antibody.

Please note: All products are 'FOR RESEARCH USE ONLY. NOT FOR USE IN DIAGNOSTIC OR THERAPEUTIC PROCEDURES'.